

JULY
2009

MONTHLY
JOURNAL OF
UPDATES AND
INFORMATION

Florida Cancer Data System

Monthly Memo

What's New:

The following information is currently available on the FCDS website.

- FCDS 2009 Annual Conference Presentations (**Downloads**)
- FCDS/FCRA 2007-2008 NAACCR Hospital Registrar Webinar Series (**Downloads**)
- **Jean Byers:** Current and past winners of State of Florida's Award for Excellence in Cancer Registration (**Downloads**)
- FCDS Register Vol. 43 (**Newsletters**)
- CDC HPV Typing Study (**Downloads**)
- FCDS Teleconferences (**Downloads**)



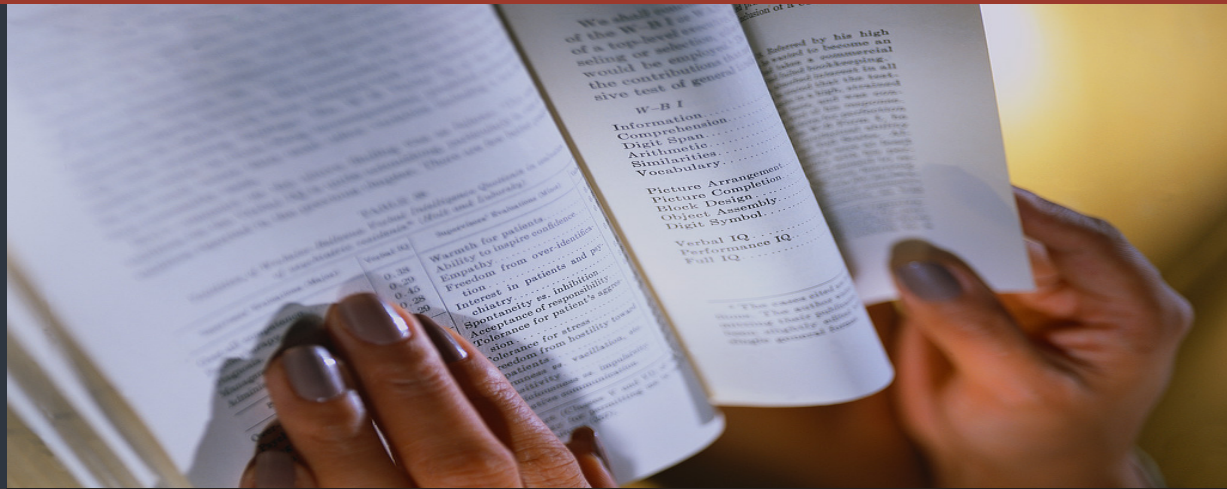
NAACCR 2008-2009 Cancer Registry and Surveillance Webinar Series

The last webinar in the NAACCR 2008-2009 Cancer Registry and Surveillance webinar series is Assessing and Using Cancer Data. It will be presented on 9/03/2009 from 9am - 12pm.

Please go to the FCDS website to register online for your location of choice. Registration is required https://fcds.med.miami.edu/scripts/naaccr_webinar.pl. The number of participants allowed to be registered for the webinar will be dependent on space availability. For more information, please contact Meg Herna at 305-243-2625 or mhera@med.miami.edu.



Happy Independence Day



Florida Cancer Data System



**Data
Acquisition
Manual
2009**

Florida's health
THE FLORIDA DEPARTMENT OF HEALTH

Clicks @ FCDS

The **DATA ACQUISITION MANUAL** is now available on the Florida Cancer Data System website.

Link: <http://fcds.med.miami.edu/inc/downloads.shtml#dam>

TIP: You can right-click and Save-As the large .pdf file onto your desktop.

Double-click on your desktop .pdf file for faster/easier searching



FCDS 2008 QUALITY ASSURANCE AUDIT

FCDS conducted the 2008 Quality Assurance Audit in the fall of 2008, which consisted of re-abstracting the 2006 analytical cases. A total of three-hundred and twenty-three cases were re-abstracted. Forty-one facilities were randomly selected to participate in the audit. FCDS wants to thank all of these facilities for their cooperation.

During the first weeks of February 2009, FCDS began the reconciliation process. All facilities audited received a packet containing the Reconciliation Request forms. The Reconciliation Request forms summarized the comparison of data items coded by the auditor during the re-abstracting portion of the audit to the data originally submitted to FCDS by

the audited facility through the regular cancer reporting process. If any discrepancies were found, the field on the report containing the discrepant data item is preceded with one asterisk (*) indicating the discrepancy. These reviews are important to FCDS because they allow assessment with regard to standardized interpretation of data definitions, coding rules and guidelines, policies and procedures and serve to identify areas that may require further education and training.

The following is a summary report of the audit. If you have any questions, please contact Meg Herna at 305-243-4600.



Reabstract Summary Report

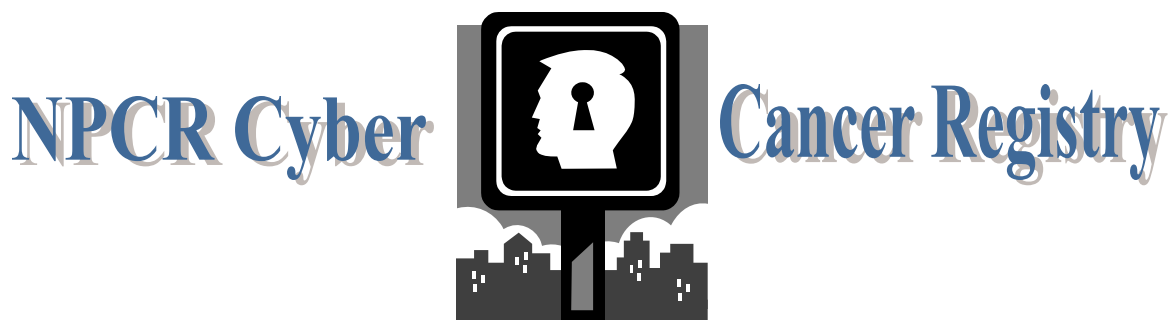
FOR AUDIT YEAR: 2006

Total All Facilities

<u>Demographic Information</u>	<u>Count (n=323)</u>	<u>Percentage</u>
Name	15	4.64
Date of Birth	9	2.79
Sex	3	.93
Race	13	4.02
Ethnicity	13	4.02
Address at Diagnosis	191	59.13
Address at First Contact	200	61.92
<u>Tumor Information:</u>	<u>Count (n=323)</u>	<u>Percentage</u>
County of Dx	30	9.29
Sequence Number	0	.00
Date of Diagnosis	74	22.91
Diagnostic Confirmation	25	7.74
Primary Site	49	15.17
Laterality	15	4.64
Histology	54	16.72
Grade	38	11.76
Reg Node +	28	8.67
RegNode Exam	36	11.15
CS Tumor Size	114	35.29
CS Extention	114	35.29
TS/Ext - Eval	50	15.48
Lymph Nodes	72	22.29
Reg Nodes Eval	44	13.62
Mets at DX	45	13.93
Mets Eval	38	11.76
Site Specific Factor 1	48	14.86
Site Specific Factor 2	23	7.12
Site Specific Factor 3	21	6.50
Site Specific Factor 4	28	8.67
Site Specific Factor 5	20	6.19
Site Specific Factor 6	26	8.05
<u>First Course of Treatment:</u>	<u>Count (n=323)</u>	<u>Percentage</u>
Surgery Primary Site	82	25.39
Scope Regional Lymph Node Surger	41	12.69
Surgery Other/Reg/Dist Sites	24	7.43
Reason No Surgery	33	10.22
Radiation Type	25	7.74
Rad - Regional RX Modalit	27	8.36
Chemo Type	65	20.12
Hormone Type	15	4.64
BRM/Immunotherapy Type	8	2.48
Transplant/Endo Type	10	3.10
Other Treatment Type	10	3.10
Surg/Rad Seq	17	5.26
Systemic Surg Seq	30	9.29

Total Master File Records

323



The Centers for Disease Control and Prevention's National Program of Cancer Registries (NPCR) has designed and developed a Web-based learning tool. The application, appropriately named the Cyber Cancer Registry, is an interactive virtual registry system for developing and assessing the skills of cancer registry personnel and will allow those new to cancer registration an opportunity to gain hands-on practice in core areas of cancer registry operations.

The Cyber Cancer Registry fulfills NPCR's core education values:

- Education and training are essential elements in cancer data quality, completeness and timeliness.
- Educational content must respond to issues identified through data quality assurance activities.
- Education and training must be offered continuously in diverse formats and methods of access.

The Cyber Cancer Registry will be completed in phases and will consist of modules pertaining to the core functions of cancer registration in the hospital and central cancer registry settings. The first module, Casefinding (cancer case identification), is now available at <http://apps.nccd.cdc.gov/dcpcccr>. This is a virtual hospital setting with casefinding sources that include pathology reports, medical record disease indices, medical discharge logs, radiation oncology logs, and medical oncology logs.

The Cyber Cancer Registry mimics the medical database structure and recreates database activities. The framework for the system allows for the addition of other functions (i.e., abstracting cancer cases) in future releases. Actual de-identified medical record source documents submitted by cancer registrars working in the field provide users a simulated registry experience. The medical record documents present varying degrees of difficulty and challenging situations in which coding rules and instructions must be applied. Each module will give immediate feedback to the user through practical exercises and assessments to evaluate the level of competency, track training scores and provide a certificate of completion for each assessment.

In practice, these modules can be used to enhance the education of cancer registrars and can potentially serve to satisfy part of the clinical practicum for NCRA-approved formal education programs.

The National Cancer Registrars Association (NCRA) is providing subject matter expertise in formal education, hospital and central cancer registry operations and management through the creation and maintenance of detailed module content, exercises, assessments and feedback responses.

The Cyber Registry can be accessed through NPCR's Web site (<http://www.cdc.gov/cancer/npcr/>) and via a link from NCRA's Web site (<http://www.ncra-usa.org>).



Florida Cancer Data System Cancer Reporting Completeness Report



PROJECT DIRECTOR:
Jill A. Mackinnon, PhD, CTR

**ADMINISTRATIVE
DIRECTOR:**
Gary M. Levin, BA, CTR

EDITORIAL STAFF:
Melissa K. Williams

CONTRIBUTORS:
Megsys C. Herna, BA, CTR
Sarah J. Manson, BS, RHIT, CTR

TOTAL NUMBER OF CASES IN THE FCDS MASTERFILE AS OF JUNE 30, 2009

Total number of *New Cases* added to the FCDS Master file in June 2009: 34,572

The figures shown below reflect initial patient encounters (admissions) for cancer by year.

ADMISSION YEAR	HOSPITAL	RADIATION	AMBI/ SURG	PHYSICIAN OFFICE	DERM PATH	DCO	TOTAL CASES	NEW CASES
2008	154,534	4,012	5	2,530	3	Pending	161,084	31,585
2007	163,960	8,790	2,088	2,628	0	Pending	177,466	2,792
2006	165,335	8,761	3,037	1,738	0	2,684	181,555	215

		<u>Actual</u>	<u>Expected</u>
% Complete for:	2008	98%	100%
	2007	100%	100%
	2006	100%	100%

**Expected % based on 165,000 reported cases/year*

TOTAL NUMBER OF CASES IN THE FCDS MASTERFILE AS OF JULY 31, 2009

Total number of *New Cases* added to the FCDS Master file in July 2009: 10,946

The figures shown below reflect initial patient encounters (admissions) for cancer by year.

ADMISSION YEAR	HOSPITAL	RADIATION	AMBI/ SURG	PHYSICIAN OFFICE	DERM PATH	DCO	TOTAL CASES	NEW CASES
2009	6,000	202	0	92	0	Pending	6,294	6,294
2008	158,499	4,053	5	2,559	3	Pending	165,119	3,285
2007	164,748	8,806	2,719	2,629	0	Pending	178,902	1,367

		<u>Actual</u>	<u>Expected</u>
% Complete for:	2009	4%	8%
	2008	100%	100%
	2007	100%	100%

**Expected % based on 165,000 reported cases/year*