

Happy
Labor Day



WHAT'S NEW :

The following information is currently available on the FCDS website.

- FLORIDA ANNUAL CANCER REPORT: 2002 INCIDENCE AND MORTALITY
- FCDS 2006 DAM
- FCDS 2006 IMPLEMENTATION GUIDE FOR NAACCR V. 11
(REVISED 8/01/2006) - APPLIES TO FACILITIES SUBMITTING FULL CANCER ABSTRACTS, NOT PATH OR RT IDENTIFICATION DATA
- FCDS REGISTER - VOL. 31

FCDS MAILING INFORMATION

US Postal Service mail including Express mail, Priority mail and Certified mail should be sent to the following PO Box address:

FCDS/University of Miami
Miller School of Medicine
P. O. Box 016960 (D4-11)
Miami, FL 33101

FCDS STREET ADDRESS
SHOULD ONLY BE USED
FOR COURIER PACKAGES
(Federal Express, UPS, Airborne Express)

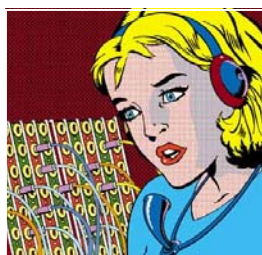
FCDS/University of Miami
Miller School of Medicine
1550 NW 10th Ave, Fox Bldg,
Room 410
Miami, FL 33136

Florida Cancer Data System September 2006 Monthly Memo



2006 Data Acquisition Manual

The Discard!



We here at FCDS are requesting that all Data Acquisition Manuals prior to the 2006 version be discarded.

We need to have a hard copy!

Some of us handle multiple facilities...

What shall we do?



But the information is the same except for a few changes, correct?

Why do we need to discard the old manual?

No, madame. The current version has been thoroughly revised and updated with the newest requirements for reporting.



It is online at
<http://fcds.med.miami.edu>
for your use or you may download it.



News & Information



News & Information



NEW FIELD COORDINATORS

Anne Auguste, CTR, and Betty Hallo, CTR, have taken over the duties as Field Coordinator for Mae Whitehead's hospitals. The following listing indicates the Facility's number, the Hospital, and responsible Field Coordinator. Contact information for Anne and Betty are as follows: Anne's direct phone number is 305-243-2633 and her email address is aauguste@med.miami.edu. Betty's direct line is 305-243-2627 and email address is bhallo@med.miami.edu.

If you have any questions regarding your hospital, please contact your new Field Coordinator.

FACILITY #	FACILITY NAME	RESPONSIBLE FIELD COORDINATOR
2336	BAPTIST HOSPITAL OF MIAMI	Betty Hallo
2736	BAPTIST HOSPITAL OF PENSACOLA	Betty Hallo
6346	BARTOW MEMORIAL HOSPITAL	Anne Auguste
1306	BAY MEDICAL CENTER	Betty Hallo
7405	BERT FISH MEDICAL CENTER	Betty Hallo
6046	BOCA RATON COMMUNITY HOSPITAL	Betty Hallo
3705	BROOKSVILLE REGIONAL HOSPITAL	Anne Auguste
1605	BROWARD GENERAL MEDICAL CENTER	Anne Auguste
1505	CAPE CANAVERAL HOSPITAL	Betty Hallo
6905	CENTRAL FLORIDA REGIONAL HOSPITAL	Anne Auguste
1905	CITRUS MEMORIAL HOSPITAL	Anne Auguste
2130	CLEVELAND CLINIC HOSP NAPLES	Anne Auguste
1647	CLEVELAND CLINIC HOSPITAL	Anne Auguste
6600	COLUMBIA LAWNWOOD REG MED CTR	Betty Hallo
6170	COMMUNITY HOSP OF NEW PT RICHEY	Betty Hallo
1645	CORAL SPRINGS MEDICAL CENTER	Betty Hallo
6003	DELRAY MEDICAL CENTER	Betty Hallo
2348	DOCTORS HOSPITAL	Betty Hallo
5446	FISHERMENS HOSPITAL	Betty Hallo
6570	FLAGLER HOSPITAL	Betty Hallo
4547	FLORIDA HOSPITAL WATERMAN	Betty Hallo
3836	FLORIDA HOSPITAL HEARTLAND	Anne Auguste
3890	FLORIDA HOSPITAL LAKE PLACID	Anne Auguste
3505	FLORIDA HOSPITAL WAUCHULA	Anne Auguste
1686	FLORIDA MEDICAL CENTER	Betty Hallo
5670	FORT WALTON BEACH MED CTR	Betty Hallo

Continued on page 3



News & Information

Continued from page 2

FACILITY #	FACILITY NAME	RESPONSIBLE FIELD COORDINATOR
3005	GADSDEN MEMORIAL HOSPITAL	Betty Hallo
6007	GLADES GENERAL HOSPITAL	Betty Hallo
6704	GULF BREEZE HOSPITAL	Betty Hallo
3316	GULF PINES HOSPITAL	Betty Hallo
3932	H LEE MOFFITT CANCER CTR	Anne Auguste
5806	HEALTH CENTRAL	Anne Auguste
6347	HEART OF FLORIDA HOSPITAL	Anne Auguste
6205	HELEN ELLIS MEMORIAL HOSP	Anne Auguste
2349	HIALEAH HOSPITAL	Anne Auguste
3805	HIGHLANDS REG MED CENTER	Anne Auguste
1546	HOLMES REGIONAL MED CTR	Anne Auguste
2306	HOMESTEAD HOSPITAL	Betty Hallo
1609	IMPERIAL POINT MEDICAL CTR	Betty Hallo
3901	J A HALEY VA MEDICAL CENTER	Anne Auguste
6048	JFK MEDICAL CENTER	Betty Hallo
6074	JUPITER MEDICAL CENTER	Anne Auguste
3947	KINDRED HOSP CENTRAL TAMPA	Anne Auguste
2246	LAKE CITY MEDICAL CENTER	Betty Hallo
6348	LAKE WALES HOSPITAL	Anne Auguste
6206	LARGO MEDICAL CENTER	Betty Hallo
5406	LOWER KEYS MEDICAL CENTER	Betty Hallo
5471	MARINERS HOSPITAL	Betty Hallo
6278	MEASE COUNTRYSIDE HOSPITAL	Betty Hallo
6249	MEASE DUNEDIN HOSPITAL	Betty Hallo
3977	MEMORIAL HOSPITAL OF TAMPA	Anne Auguste
2326	MIAMI V A MEDICAL CENTER	Anne Auguste
6250	MORTON PLANT HOSPITAL	Betty Hallo
5205	MUNROE REGIONAL MED CTR	Anne Auguste
1170	N FLORIDA REGIONAL MED CTR	Betty Hallo
2146	NCH HEALTHCARE SYSTEM	Betty Hallo
6106	NORTH BAY HOSPITAL	Betty Hallo
1607	NORTH BROWARD MEDICAL CTR	Betty Hallo
2150	NORTH COLLIER HOSPITAL	Betty Hallo
5607	NORTH OKALOOSA MEDICAL CTR	Betty Hallo

Continued on page 4

News

&

Information





News & Information

Continued from page 3

FACILITY #	FACILITY NAME	RESPONSIBLE FIELD COORDINATOR
2353	NORTH SHORE MEDICAL CENTER	Betty Hallo
1681	NORTHWEST MEDICAL CENTER	Betty Hallo
5200	OCALA REGIONAL MEDICAL CENTER	Betty Hallo
5967	OSCEOLA REGIONAL MEDICAL CENTER	Anne Auguste
1508	PALM BAY COMMUNITY HOSPITAL	Anne Auguste
6070	PALM BEACH GARDENS MEDICAL CTR	Betty Hallo
6273	PALMS OF PASADENA HOSPITAL	Betty Hallo
6069	PALMS WEST HOSPITAL	Betty Hallo
2374	PARKWAY REGIONAL MED CTR - EAST	Betty Hallo
1506	PARRISH MEDICAL CENTER	Betty Hallo
6171	PASCO REG MED HOSPITAL	Betty Hallo
1676	PLANTATION GENERAL HOSP	Betty Hallo
6446	PUTNAM COMMUNITY MEDICAL CTR	Betty Hallo
5705	RAULERSON HOSPITAL	Betty Hallo
5610	SACRED HEART HOSP EMERALD COAST	Betty Hallo
2738	SACRED HEART HOSPITAL	Betty Hallo
6707	SANTA ROSA MEDICAL CENTER	Betty Hallo
1900	SEVEN RIVERS REGIONAL MEDICAL CTR	Anne Auguste
3988	SOUTH BAY HOSPITAL	Anne Auguste
3938	SOUTH FLORIDA BAPTIST HOSPITAL	Anne Auguste
4546	SOUTH LAKE HOSPITAL	Betty Hallo
2376	SOUTH MIAMI HOSPITAL	Betty Hallo
4670	SOUTH WEST FL REGIONAL MED CTR	Betty Hallo
3715	SPRING HILL REGIONAL HOSPITAL	Anne Auguste
3937	ST JOSEPH HOSPITAL	Betty Hallo
6647	ST LUCIE MEDICAL CENTER	Betty Hallo
6036	ST MARYS MEDICAL CENTER	Betty Hallo
6274	ST PETERSBURG GENERAL HOSPITAL	Anne Auguste
6252	SUN COAST HOSPITAL	Anne Auguste
3978	TOWN AND COUNTRY HOSPITAL	Anne Auguste
5606	TWIN CITIES HOSPITAL	Betty Hallo
3907	UNIVERSITY COMMUNITY HOSPITAL-TAMPA	Betty Hallo
3973	UNIVERSITY COMMUNITY OF CARROLLWOOD	Betty Hallo
1687	UNIVERSITY MEDICAL CENTER	Betty Hallo

Continued on page 8



News & Information





By: Sarah J. Manson, BS, RHIT, CTR

QUESTION

Histology--Breast: Are diagnoses of "infiltrating duct and mucinous carcinoma" and "duct carcinoma, mucinous type" both coded to the histology code of 8523/3?

ANSWER

Code "Infiltrating duct and mucinous carcinoma" to 8523/3 [Infiltrating duct mixed with other types of carcinoma] according to the instructions for coding a single tumor with complex histology in Appendix C of the 2004 SEER manual. Assign code 8523/3 when the diagnosis is duct carcinoma mixed with another type of carcinoma. Look for "and" or "mixed" in the diagnosis.

Code the Histology field for a "ductal carcinoma, mucinous type" to 8480/3 [Mucinous carcinoma].

The instructions for coding a single tumor with complex histology are to code the specific type if the diagnosis is "Duct carcinoma, _____ type."

SOURCES

2004 SEER Manual; pgs C-471 (Appendix C)

QUESTION

CS Lymph Nodes/CS Mets at Dx--Melanoma: How are these fields coded for a melanoma primary when melanoma is identified in lymph nodes but no primary skin tumor is found?

Please see discussion.

SCENARIO

Excisional biopsy of an inguinal lymph node revealed metastatic melanoma. Multiple skin biopsies did not reveal the primary site. Subsequent lymph node dissection of superficial inguinal nodes showed microscopic focus of malignant melanoma in subcutaneous fat adjacent to previous procedure site. No evidence of metastatic melanoma in 7 lymph nodes. Dissection of external iliac lymph nodes showed no evidence of melanoma in 5 lymph nodes.

ANSWER

Code CS Lymph Nodes 80 [Lymph nodes, NOS]. Code CS Mets at DX 00 [None]. Since it cannot be determined whether the lymph nodes are regional or distant, code CS Lymph Nodes to lymph nodes, NOS.

SOURCES

1. 2004 SEER Manual; pgs C-433, C-436 (Appendix C)
2. 2004 SEER Manual; pgs 109

Q&A Section

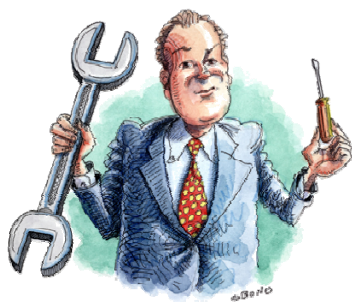


NAACCR 2006 Toolkit Workshop: Technical Tools For Data Use And Research

SEPTEMBER 25, 26, AND 27TH 2006

WILLS CONFERENCE CENTER

NASHVILLE, TENNESSEE



TOPICS INCLUDE:

- Basic SEER*Stat
- Advanced SEER*Stat
- NAACCR Call for Data Refresher
- NAACCR Method to Calculate Completeness
- Geographic Information Systems

Check the NAACCR Website, at <http://www.naaccr.org>, for more details.

Sponsored by NAACCR and NCI

Education and Training

A. Fritz and Associates
Preparing Cancer Registry Professionals for the Future

PRINCIPLES OF ONCOLOGY FOR CANCER REGISTRY PROFESSIONALS

December 4-8, 2006 – Reno, Nevada

Principles of Oncology is a concentrated five-day training program in cancer registry operations and procedures emphasizing accurate data collection methods. The training program includes extensive site-specific, hands-on case coding, abstracting and staging sessions using practice cases that are representative of the many situations registrars may face.

This program is endorsed by the National Cancer Registrars Association (NCRA) and the North American Association of Central Cancer Registries (NAACCR) and recommended by the SEER Program of the National Cancer Institute.

The program provides approximately 35 hours of classroom and individualized instruction on basic registry concepts, such as abstracting, staging (Collaborative Staging, summary staging and TNM), ICD-O coding, and how to use other resources available to registrars. Attendees will have the benefit of lectures as well as a variety of practical exercises. Extensive training materials prepared especially for this program will be provided to registrants, as well as publications from other registry sources.

Registration Fee: \$895.00

Class size will be limited to 25 registrants.

For more information please visit A.Fritz and Associates website at: <http://afritz.org/index.html>.





Deadlines & Reminders



Deadlines & Reminders



MULTIPLE PRIMARY AND HISTOLOGY CODING RULES FOR CASES DIAGNOSED

PRE JANUARY 1, 2007 ARE IN THE 2006 FCDS DAM

When determining multiple primaries and for the histology coding rules for cases diagnosed before January 1, 2007, please continue using the Multiple Primary Rules Histology Coding Rules outlined in the 2006 FCDS DAM. Do not use the "Coding Complex Morphologic Diagnosis" document. SEER no longer supports this document. A different set of Multiple Primary and Histology Coding Rules will need to be applied for cases diagnosed on or after January 1, 2007. FCDS will keep you abreast of these new set of rules. If you have any questions, please call Meg Herna at 305-243-2625.

2006 FCDS DAM Revision, page 55

ADDRESS CURRENT- POSTAL CODE

Clarification: For United States residents, U.S. possessions or territories, coding an unknown zip code (99999) is NOT allowed. Cases coded with unknown zip codes (99999) at Address Current – Postal Code will fail FCDS edits. To find valid postal zip codes in the U.S. and U.S. possession or territories, you may access the United States Postal Service website at: <http://www.usps.com/>. Below are instructions for coding Current Address:

For Current Address:

1. In Florida
 - a. State Geocode = 035
 - b. County Code = 11-77
 - c. Zip Code = Valid Zip Code within County
2. Out of State/US Possession
 - a.State Geocode = Valid Geocode for State
 - b.County Code = 88
 - c.Zip Code = Valid Zip Code for State/US Possession
3. Out of Country
 - a.State Geocode = Valid Geocode for Country
 - b.County Code = 90
 - c.Zip Code = 88888 (Other than Canada)
99999 (Canada) – Upload will convert Canadian Format to 99999

DEATH CLEARANCE 2004 DEADLINE

The deadline to report any missed cases found through the Mortality Follow-back process for 2004 and to return the completed follow-back forms was August 18, 2006. Please contact your Field Coordinator at 305-243-4600 if you have not done so yet. Failing to return these forms or being late will prevent your facility from being eligible to receive the Jean Byers Award for Excellence in Cancer Registration for reporting year 2004.

TEXT- REMARKS (NAACCR ITEM #2680)

The TEXT-Remarks field is allowed to be left blank in the NAACCR Version 11 record layout. This field is to be used as an overflow of documentation for any other text field that needs additional supporting documentation. You may indicate that it is an overflow of documentation by stating, for example, "OP Report Con't" or "Path Report Con't".



Deadlines & Reminders

2006 QUALITY CONTROL ASSURANCE AUDIT IN OCTOBER

FCDS will conduct its annual Quality Assurance Audit in October 2006, which will include a reabstracting audit of selected 2004 analytical cases. Twenty-nine hospitals were selected at random to participate in the audit. Please see below for the hospitals that will be audited. Arrangements will need to be made with the Health Information Management/Medical Records Department to make ALL the medical records to be reviewed available to the auditor as well as arrangements for a workspace large enough to accommodate one person. If the hospital has an electronic medical records system, the auditor will need to have the necessary access to the online patient records. **FCDS is planning to present a teleconference to all participating hospitals on Tuesday, September 12, 2006.** If you have any questions about the audit process, please contact Megsys Herna at (305) 243-2625.

FCDS TELECONFERENCE INFORMATION:

Date: Tuesday, September 12, 2006

Time: 2:00 p.m. – 4:00 p.m. EDT

Dial In Number: (888) 622-5357

Participant Code: 286683

Deadlines & Reminders

2605 BAPTIST MEDICAL CENTER.- BEACHES	1170 N FLORIDA REGIONAL MEDICAL CENTER
1306 BAY MEDICAL CENTER	1607 NORTH BROWARD MEDICAL CENTER
5100 BLAKE MEDICAL CENTER	5607 NORTH OKALOOSA MEDICAL CENTER
4601 CAPE CORAL HOSPITAL	1604 NORTH RIDGE MEDICAL CENTER.
5969 CELEBRATION HEALTH FL HOSPITAL	1508 PALM BAY COMMUNITY HOSPITAL
2130 CLEVELAND CLINIC HOSPITAL NAPLES	2383 PALMETTO GENERAL HOSP
6003 DELRAY MEDICAL CENTER	3988 SOUTH BAY HOSPITAL
2870 FLORIDA HOSPITAL - FLAGLER	6251 ST. ANTHONY HOSPITAL
5836 FLORIDA HOSPITAL CANCER INST SOUTH	5606 TWIN CITIES HOSPITAL
5849 FLORIDA HOSPITAL EAST ORLANDO	2372 U OF MIAMI HOSPITAL CLINICS
7446 FLORIDA HOSPITAL FISH MEMORIAL	6068 WELLINGTON REGIONAL MEDICAL CENTER
3932 H LEE MOFFITT CANCER CENTER	5202 WEST MARION COMMUNITY HOSPITAL
1546 HOLMES REGIONAL MEDICAL CENTER	
2302 JACKSON SOUTH COMMUNITY CENTER	
4647 LEHIGH REGIONAL MEDICAL CENTER	
2648 MEMORIAL HOSPITAL JACKSONVILLE	
2350 MIAMI HEART INSTITUTE	






News & Information

Continued from page 4

FACILITY #	FACILITY NAME	RESPONSIBLE FIELD COORDINATOR
6068	WELLINGTON REGIONAL MED CTR	Anne Auguste
6045	WEST BOCA MEDICAL CENTER	Anne Auguste
5202	WEST MARION COMMUNITY HOSPITAL	Betty Hallo
6026	WEST PALM BEACH V A MED CTR	Anne Auguste
2377	WESTCHESTER GENERAL HOSPITAL	Anne Auguste
1601	WESTSIDE REGIONAL MED CTR	Betty Hallo





PROJECT DIRECTOR:
Lora E. Fleming, MD, PhD

DEPUTY PROJECT DIRECTOR:
Jill A. Mackinnon, PhD, CTR

ADMINISTRATIVE DIRECTOR:
Gary M. Levin, CTR

EDITORIAL STAFF:
Melissa K. Williams

CONTRIBUTORS:
Megsyes C. Herna, BA, CTR
Sarah J. Manson, BS, RHIT, CTR



*For any questions or suggestions,
please contact the taskforce at
taskforce@fcra.org.*

Florida Cancer Data System

Cancer Reporting Completeness Report

TOTAL NUMBER OF CASES IN THE FCDS MASTERFILE AS OF AUGUST 31, 2006

Total number of New Cases added to the FCDS Master file in August 2006: **11,736**

The figures shown below reflect initial patient encounters (admissions) for cancer by year.

ADMISSION YEAR	HOSPITAL	RADIATION	AMBI/SURG	PHYSICIAN OFFICE	DERM PATH	DCO	TOTAL CASES	NEW CASES
2006	9,315	421	91	0	1	Pending	9,828	7,320
2005	147,838	4,195	554	0	701	Pending	153,310	3,580
2004	151,637	6,929	3,091	173	745	Pending	162,584	836

		<u>Actual</u>	<u>Expected</u>
% Complete for:	2006	6%	31%
	2005	100%	100%
	2004	100%	100%

**Expected % based on 152,000 reported cases/year*

Happy Labor Day

