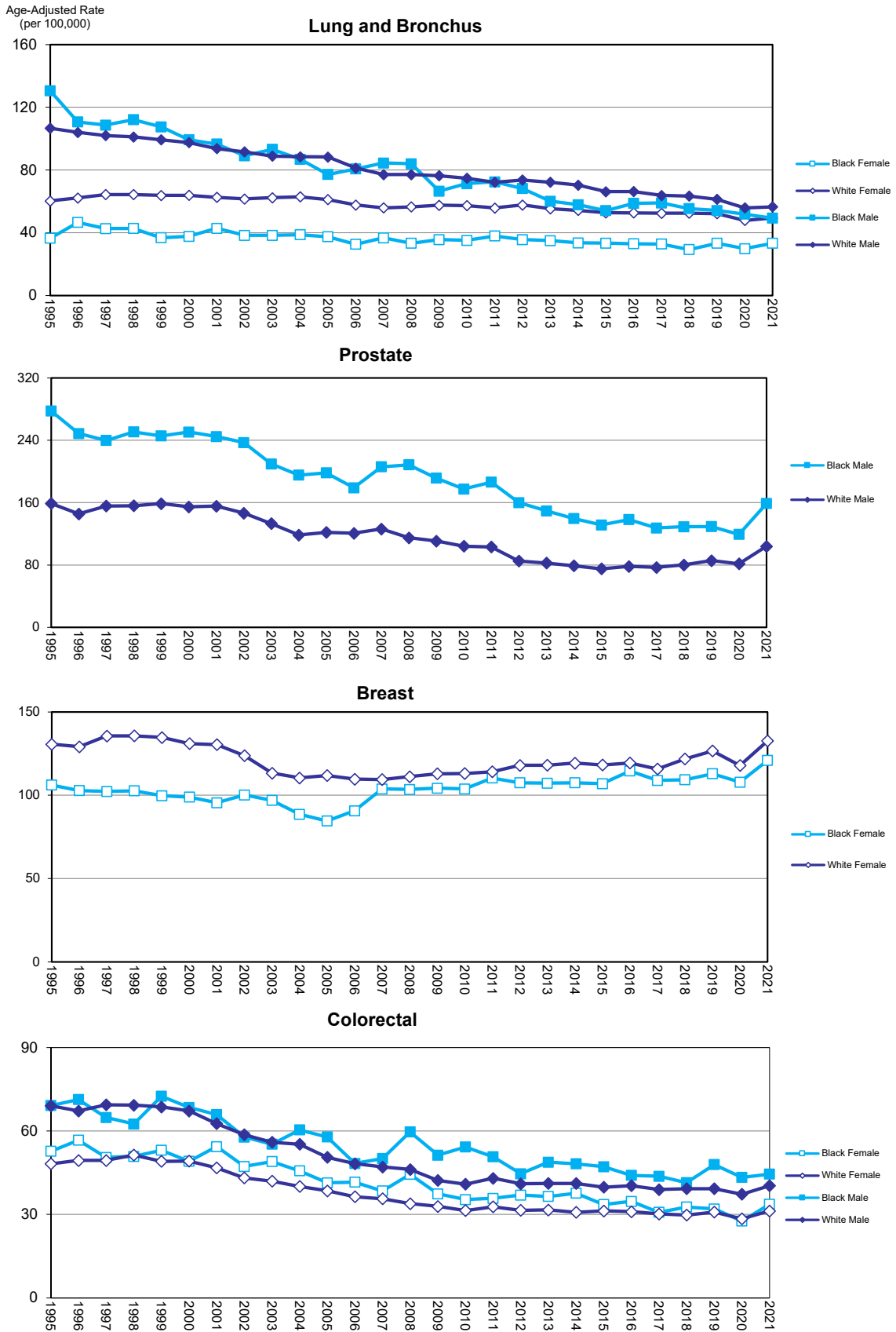


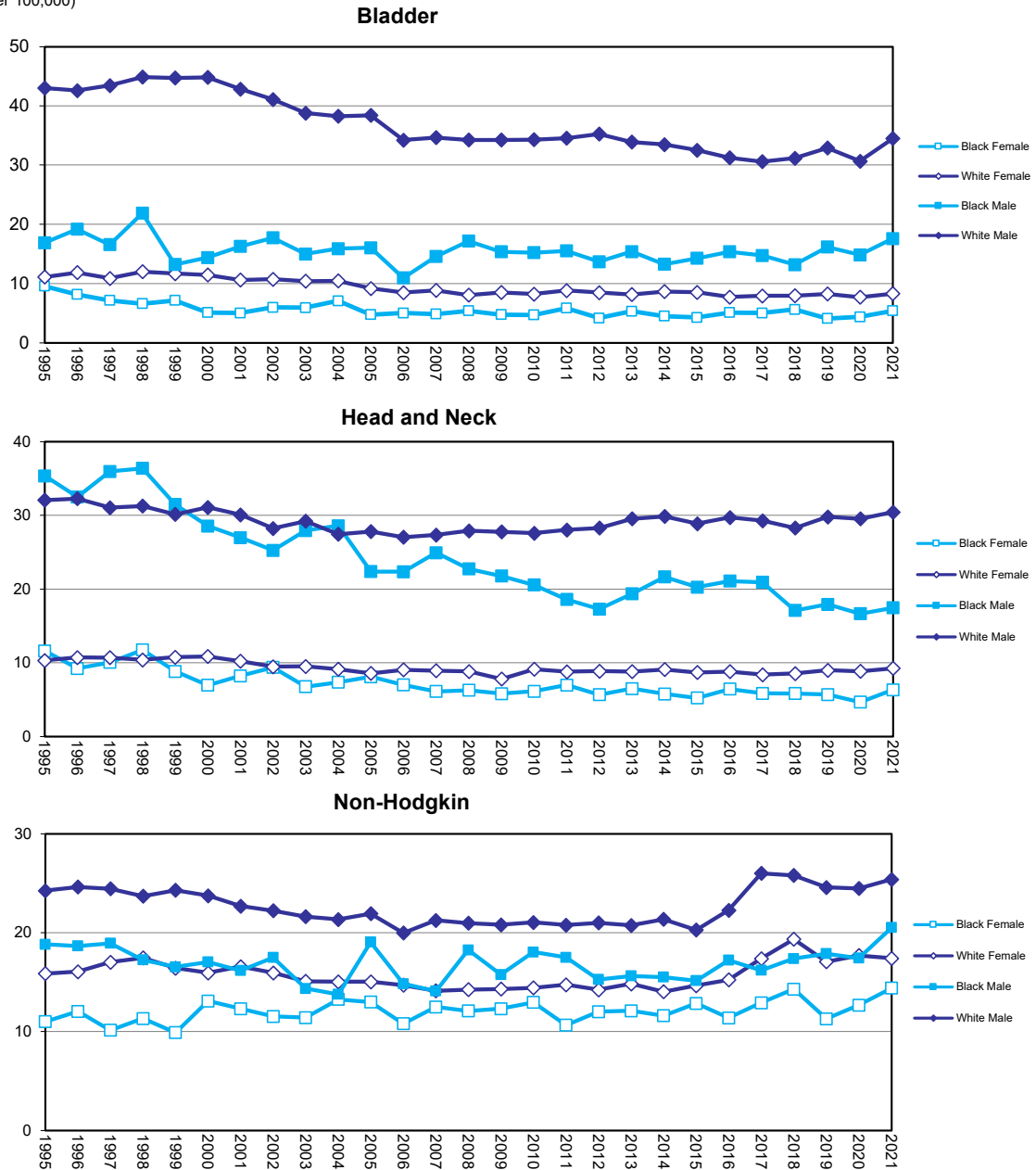
Figure 6.1 Age Adjusted Incidence Rates by Sex and Race, 1995-2021



Source of data: Florida Cancer Data System

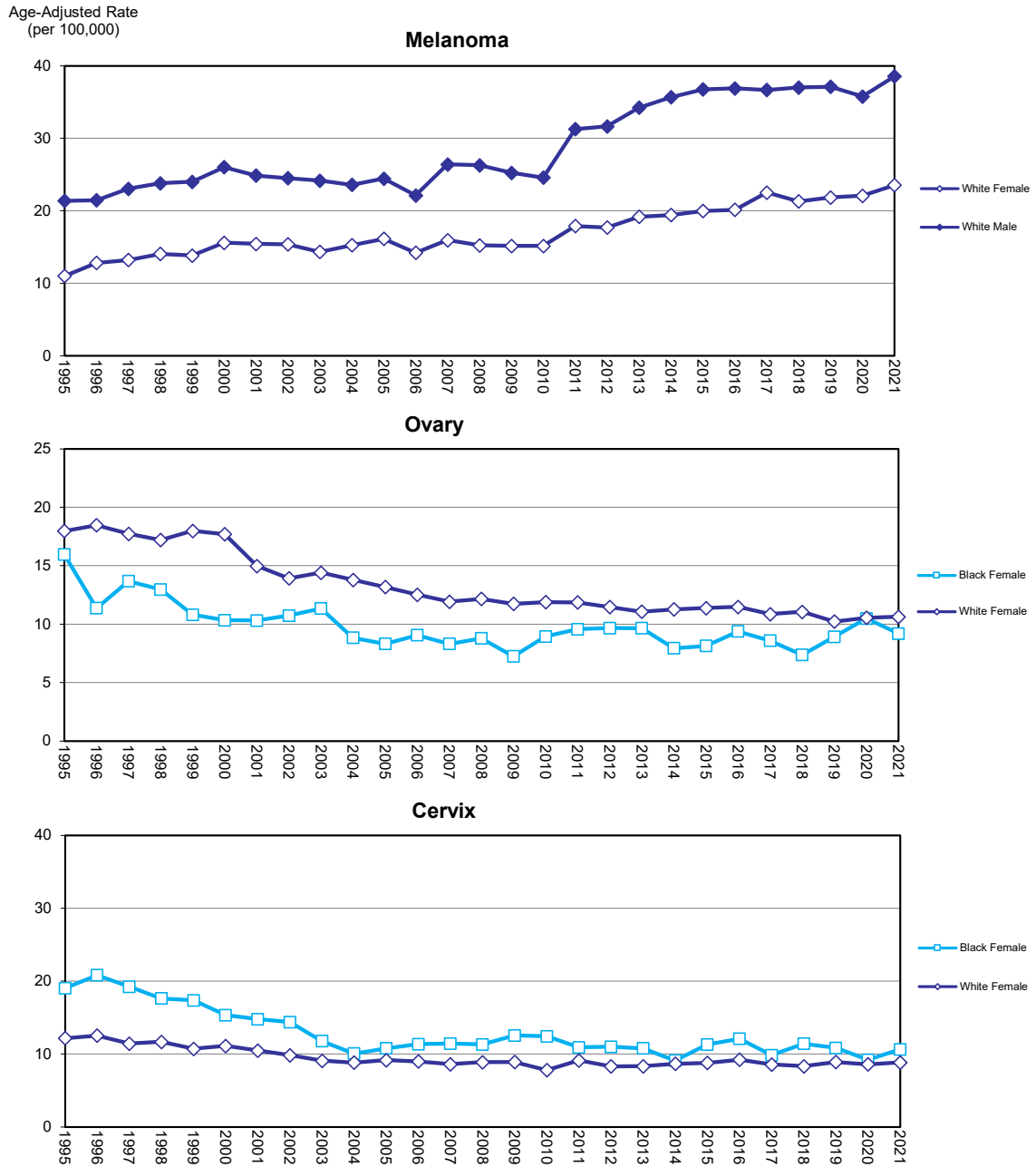
Figure 6.2 Age Adjusted Incidence Rates by Sex and Race, 1995-2021

Age-Adjusted Rate
(per 100,000)



Source of data: Florida Cancer Data System

Figure 6.3 Age Adjusted Incidence Rates by Sex and Race, 1995-2021



Source of data: Florida Cancer Data System