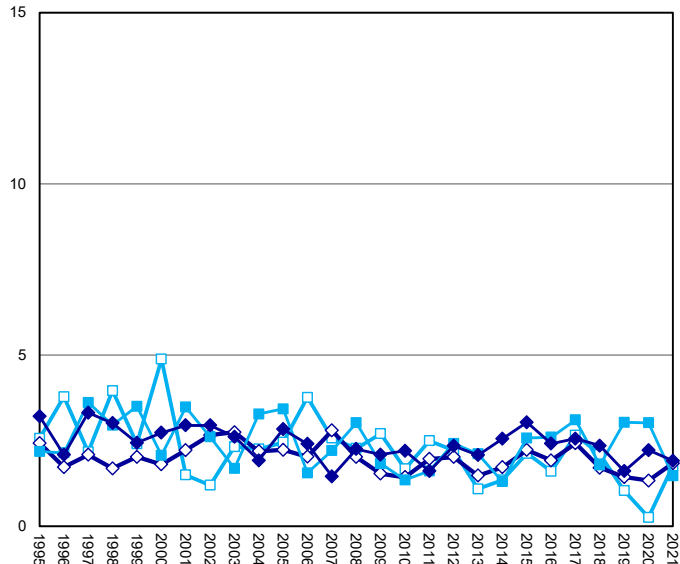


**Figure 17. Age-Specific Mortality Rates for All Cancers by Sex, Race and Age Group, Florida, 1995 - 2021**

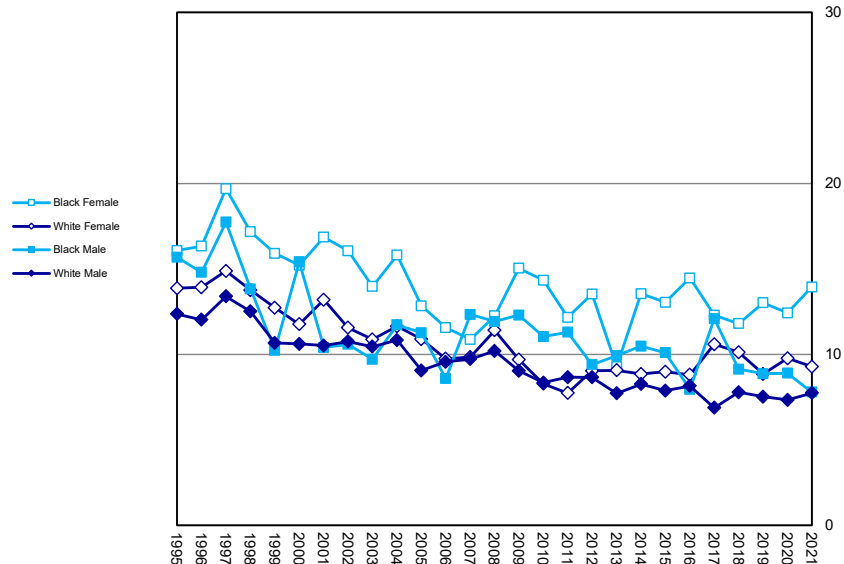
Age-Specific Rate  
(per 100,000)

**Age 0-14**

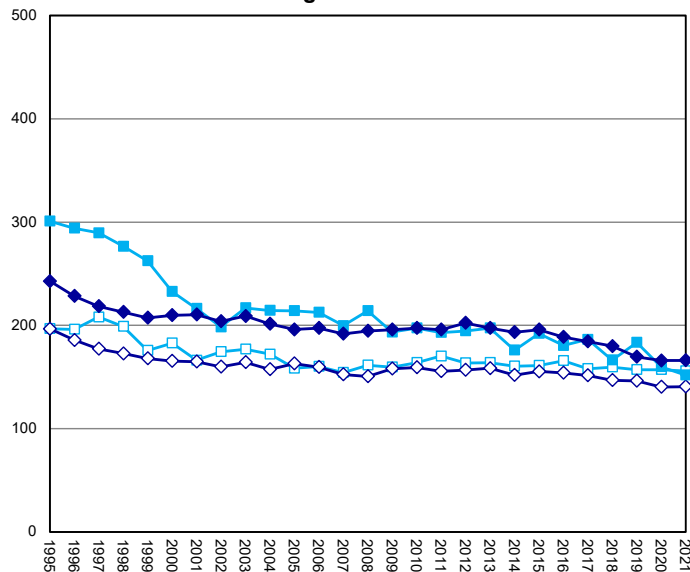


**Age 15-39**

Age-Specific Rate  
(per 100,000)



**Age 40-64**



**Age 65 and Older**

