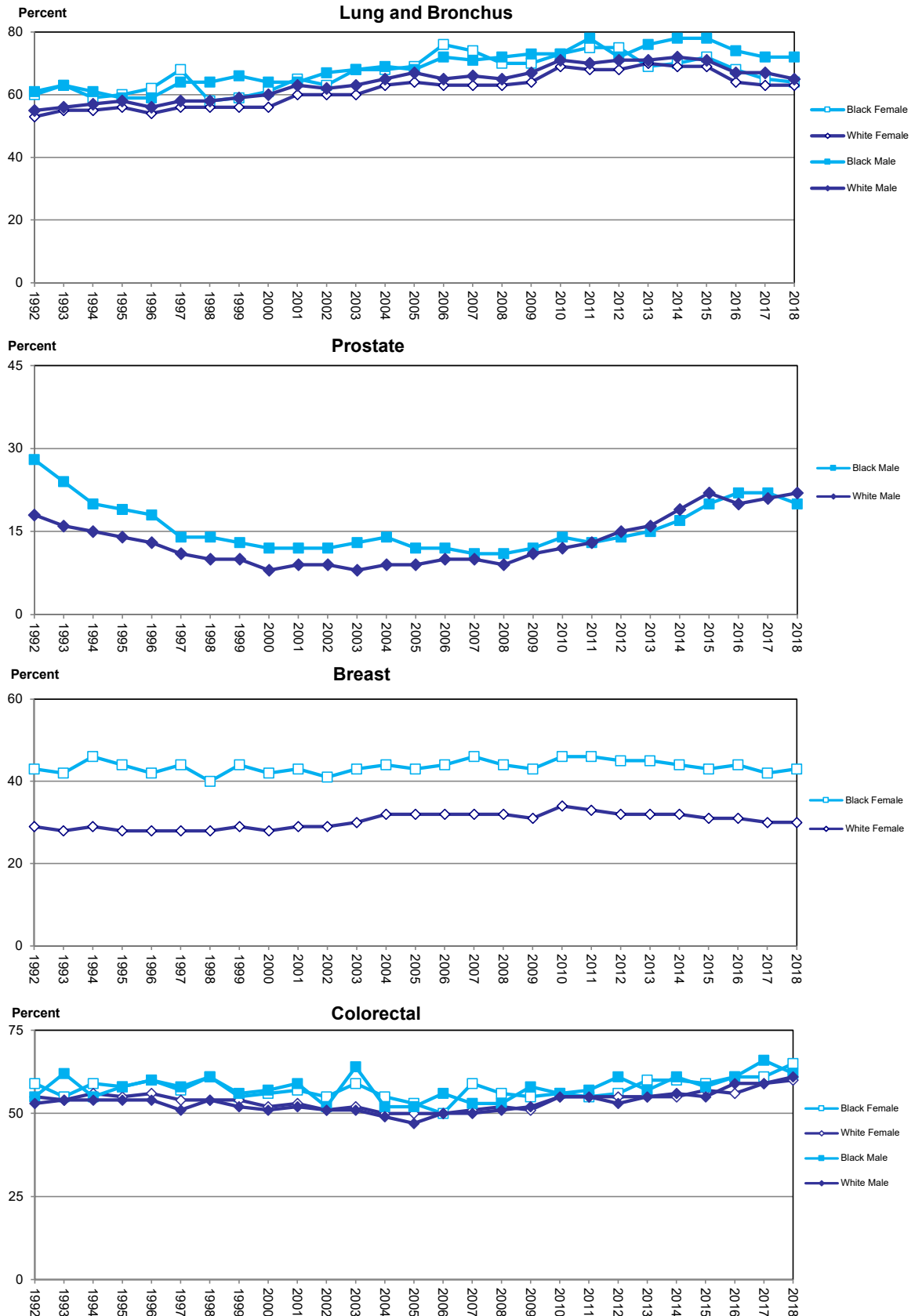


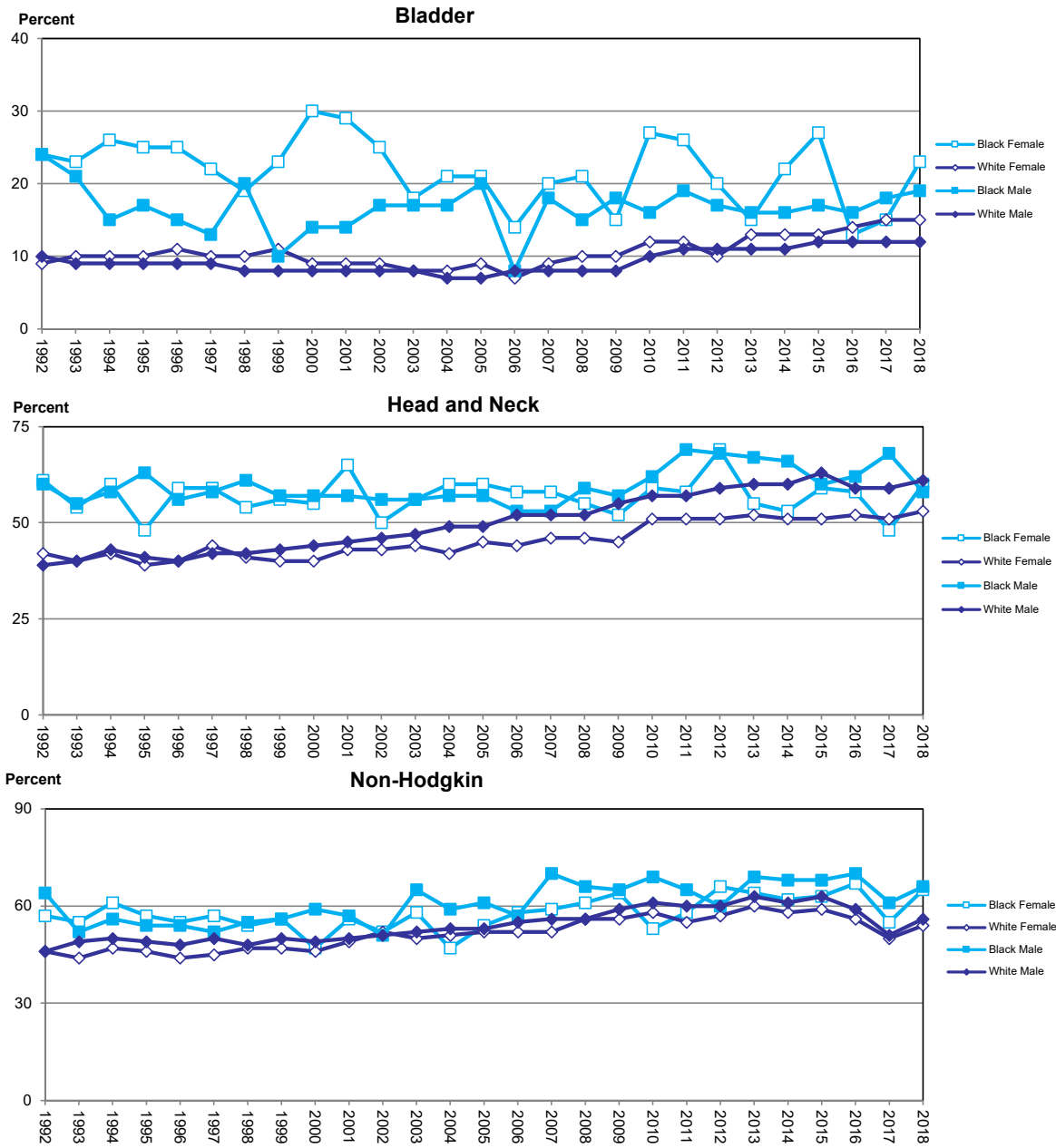
**Figure 8.1 Percentage of Advanced Stage Cancer at Diagnosis by Sex and Race, 1992-2018**



Advanced stage includes all regional and distant disease

Source of data: Florida Cancer Data System

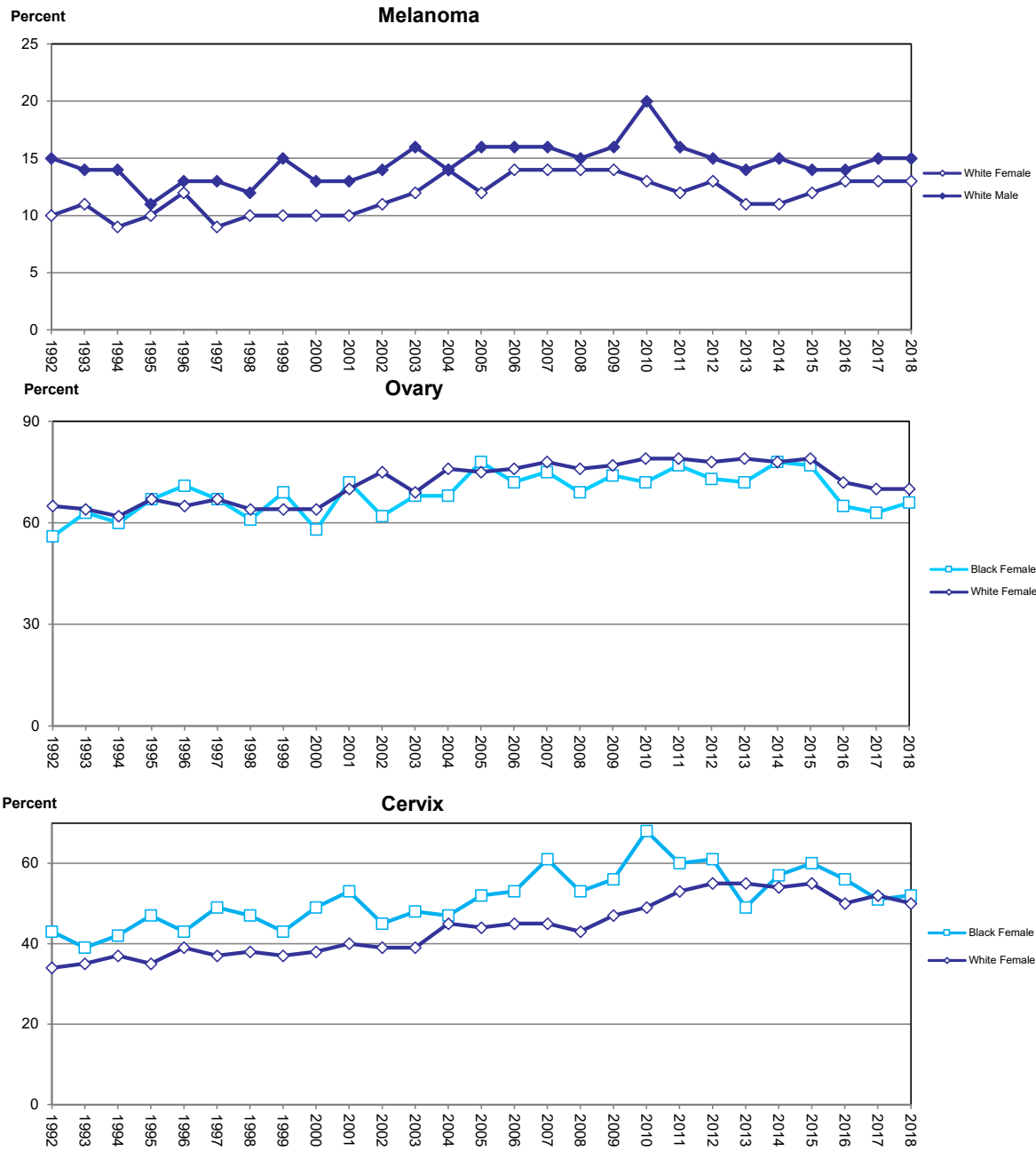
**Figure 8.2 Percentage of Advanced Stage Cancer at Diagnosis by Sex and Race, 1992-2018**



Advanced stage includes all regional and distant disease

Source of data: Florida Cancer Data System

**Figure 8.3 Percentage of Advanced Stage Cancer at Diagnosis by Sex and Race, 2008-2007**



Advanced stage includes all regional and distant disease  
 Source of data: Florida Cancer Data System