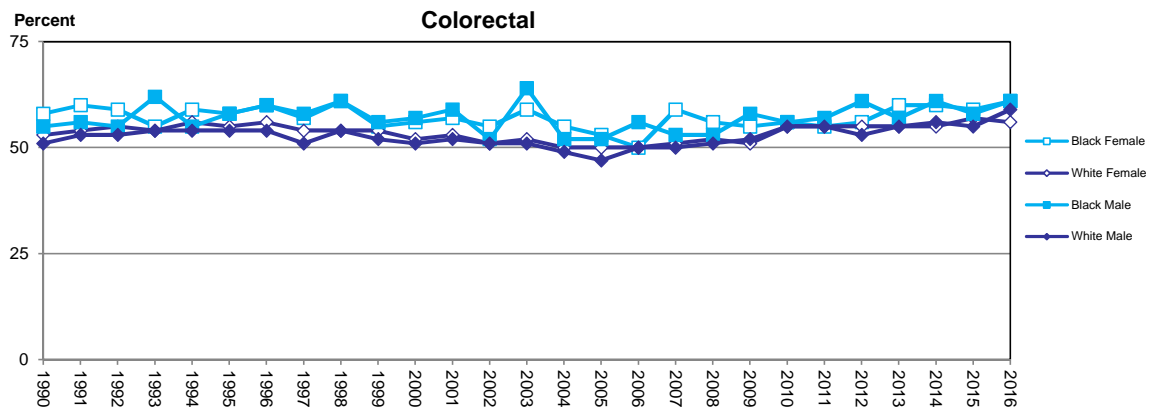
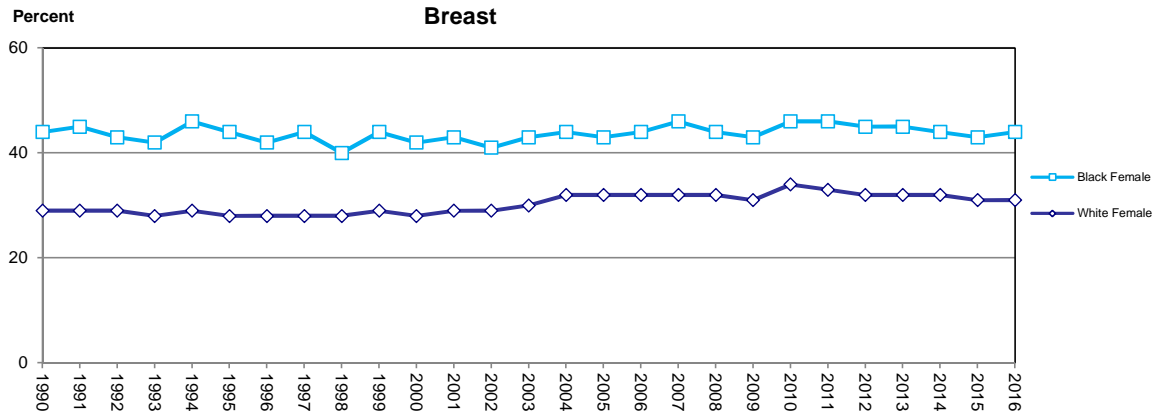
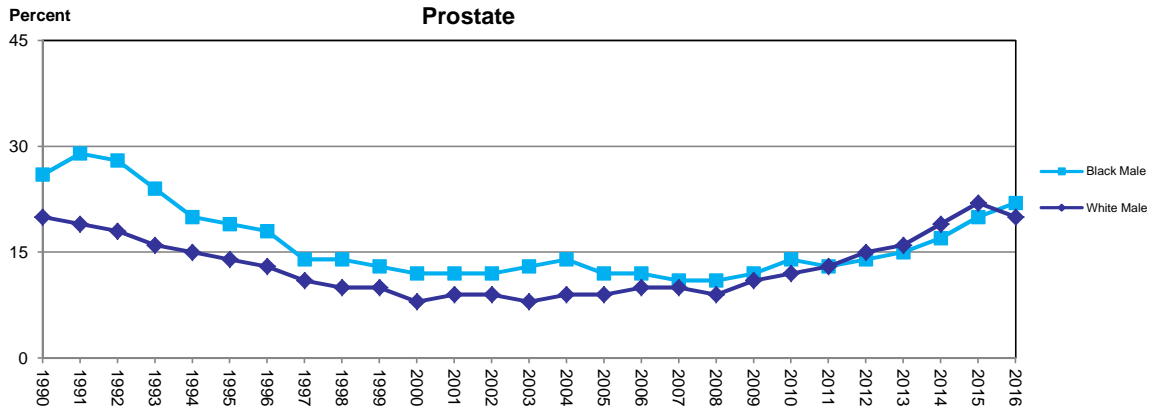
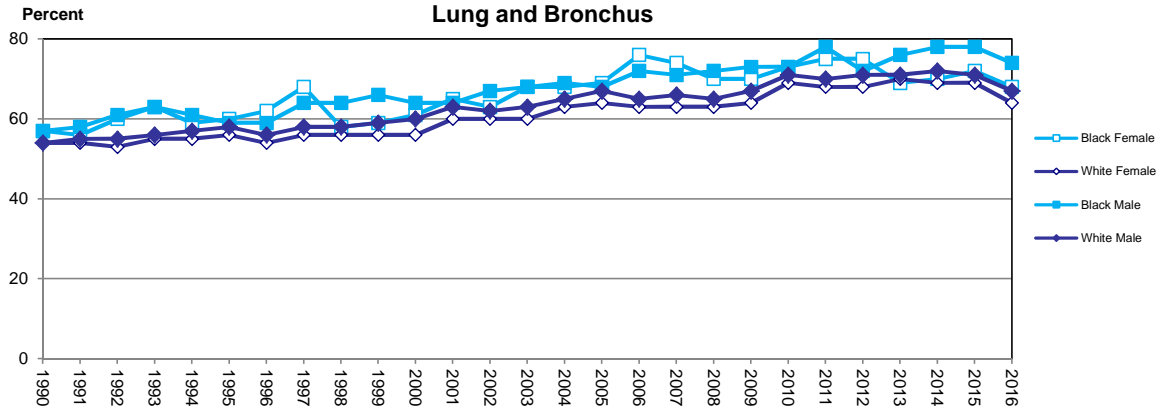
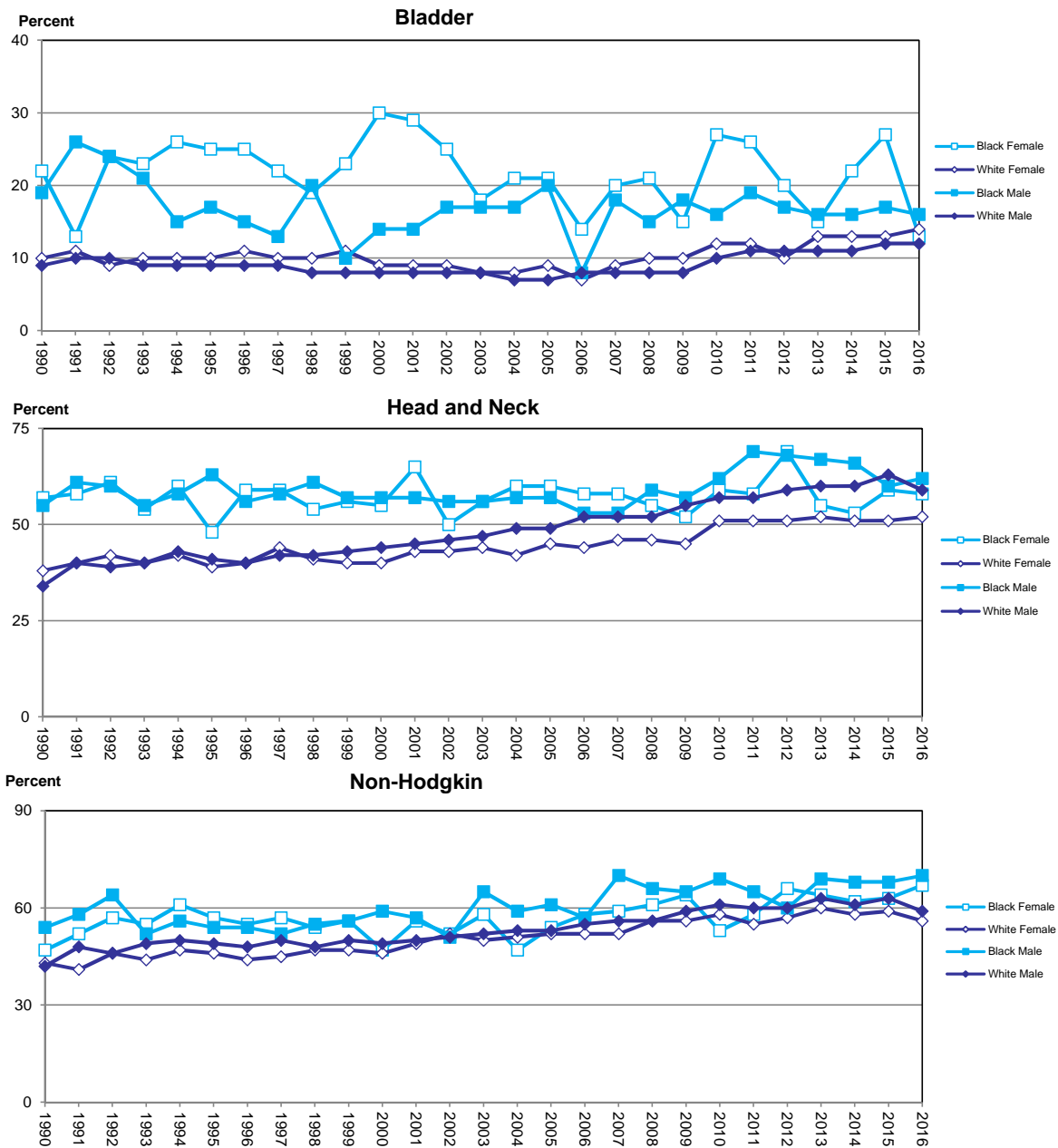


Figure 8.1 Percentage of Advanced Stage Cancer at Diagnosis by Sex and Race, 1990-2016



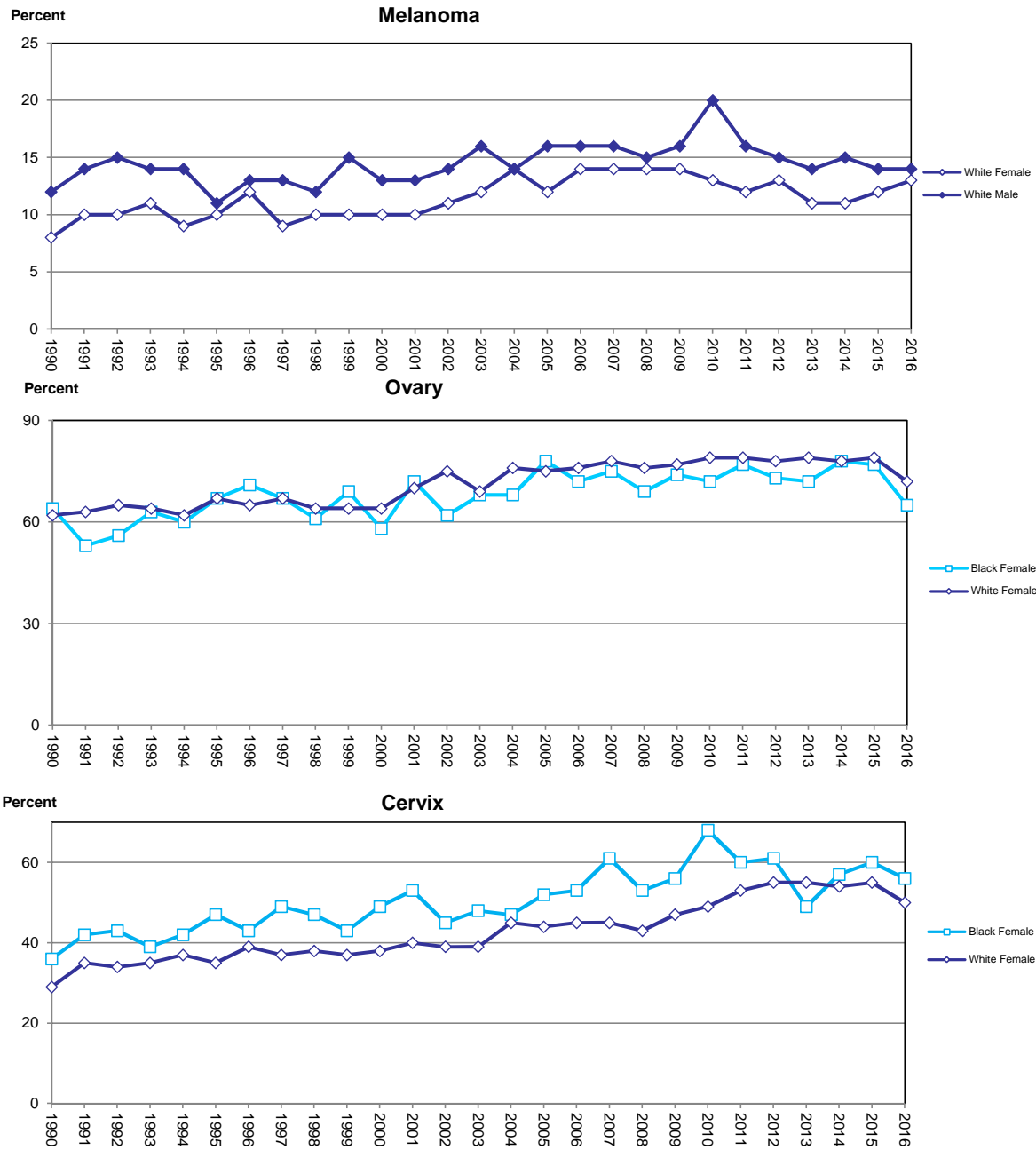
Advanced stage includes all regional and distant disease
 Source of data: Florida Cancer Data System

Figure 8.2 Percentage of Advanced Stage Cancer at Diagnosis by Sex and Race, 1990-2016



Advanced stage includes all regional and distant disease
 Source of data: Florida Cancer Data System

Figure 8.3 Percentage of Advanced Stage Cancer at Diagnosis by Sex and Race, 2006-2005



Advanced stage includes all regional and distant disease
 Source of data: Florida Cancer Data System