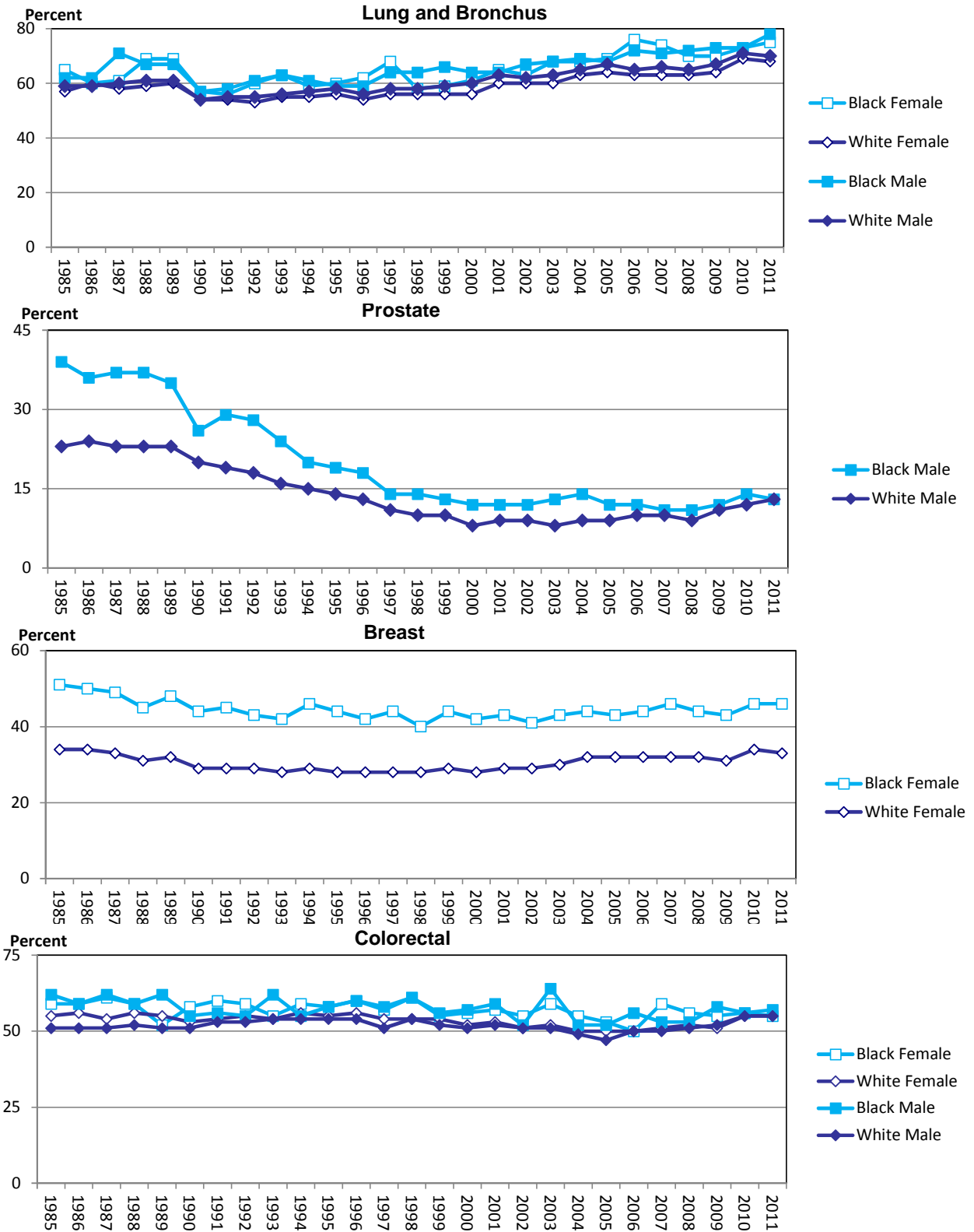


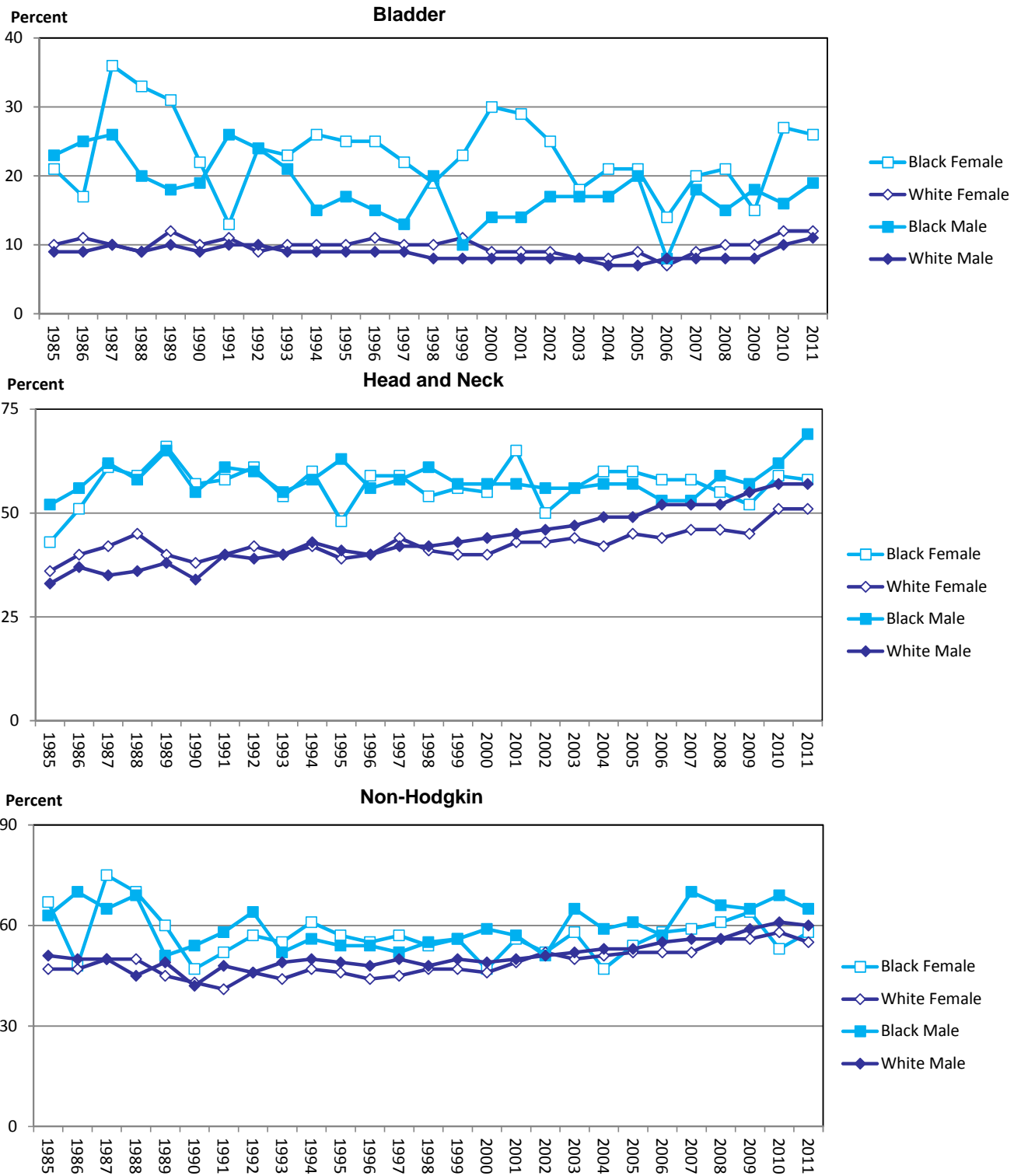
**Graph 8.1 Percentage of Advanced Stage Cancer at Diagnosis by Sex and Race, 1985-2011**



Advanced stage includes all regional and distant disease

Source of data: Florida Cancer Data System

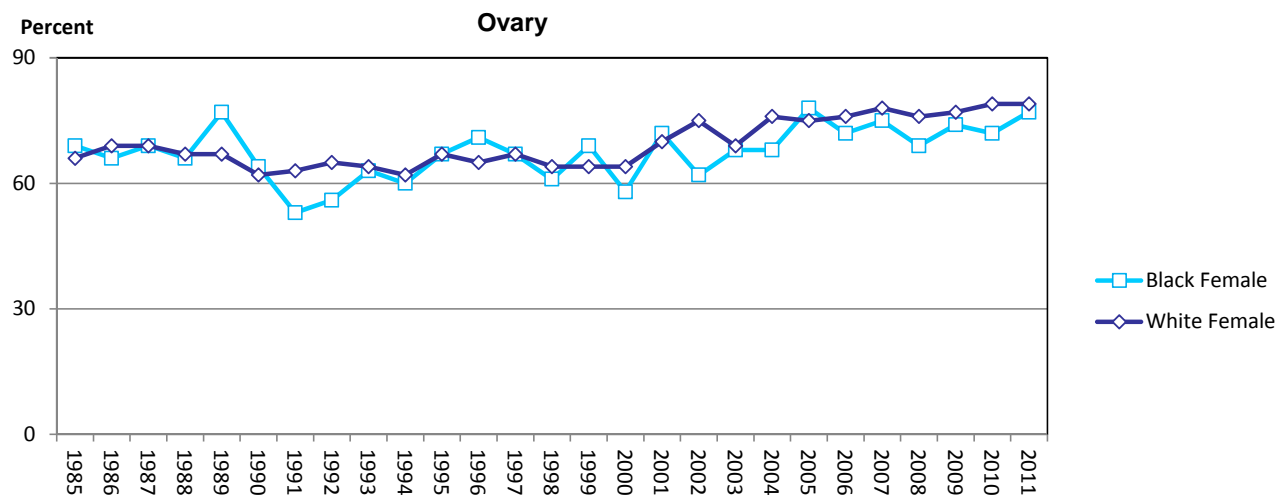
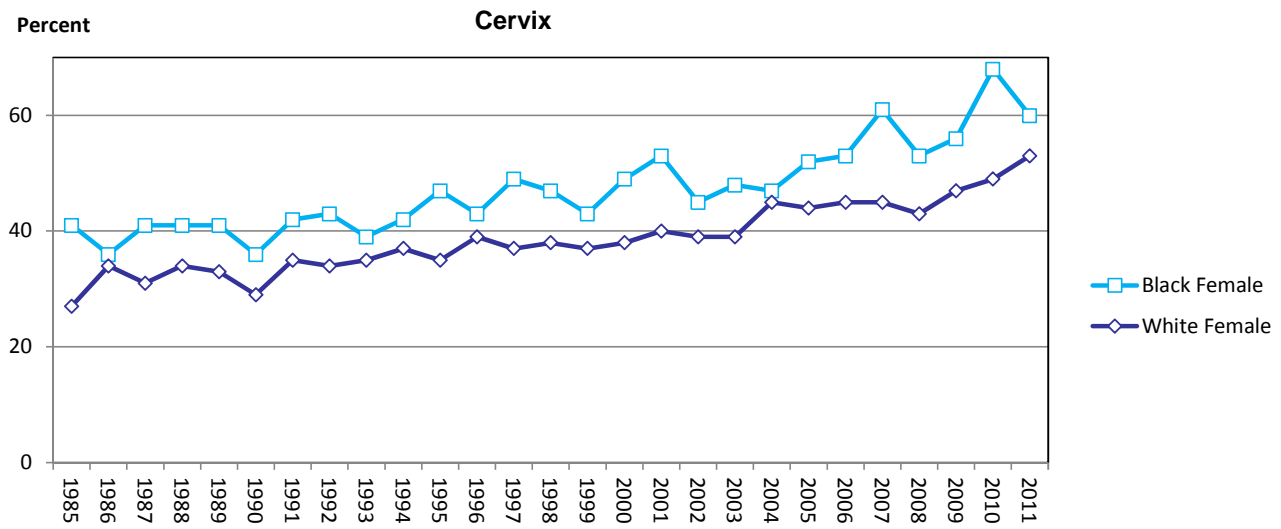
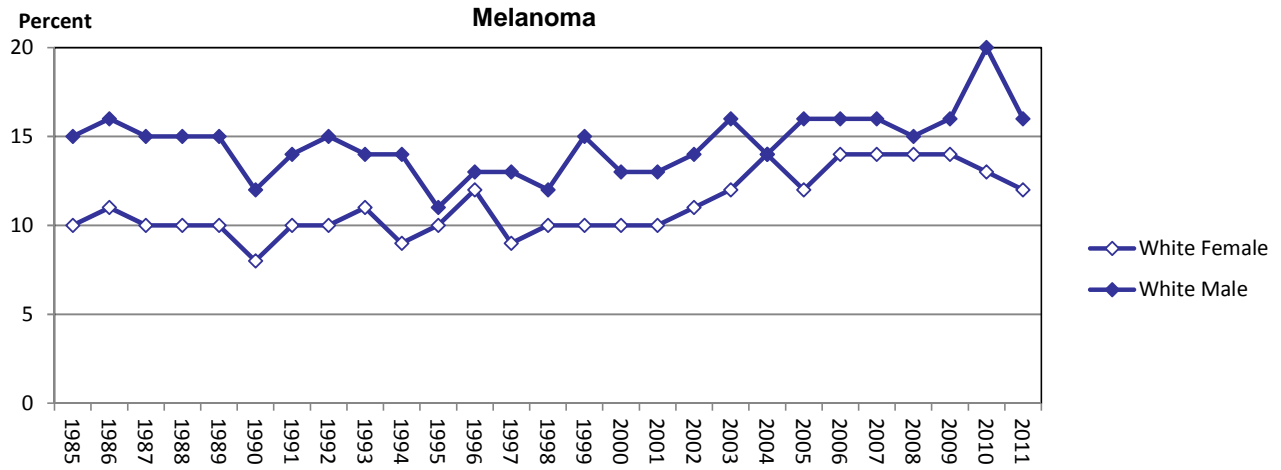
**Graph 8.2 Percentage of Advanced Stage Cancer at Diagnosis by Sex and Race, 1985-2011**



Advanced stage includes all regional and distant disease

Source of data: Florida Cancer Data System

**Graph 8.3 Percentage of Advanced Stage Cancer at Diagnosis by Sex and Race, 1985-2011**



Advanced stage includes all regional and distant disease

Source of data: Florida Cancer Data System