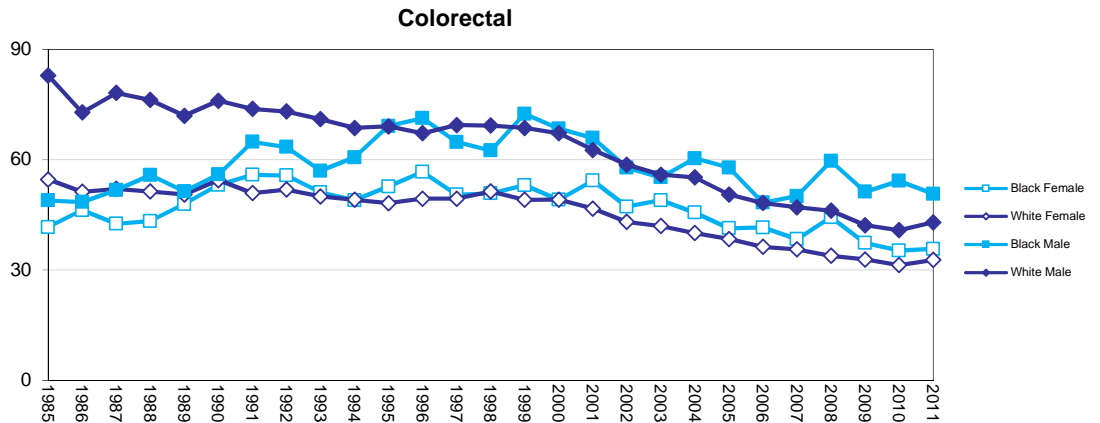
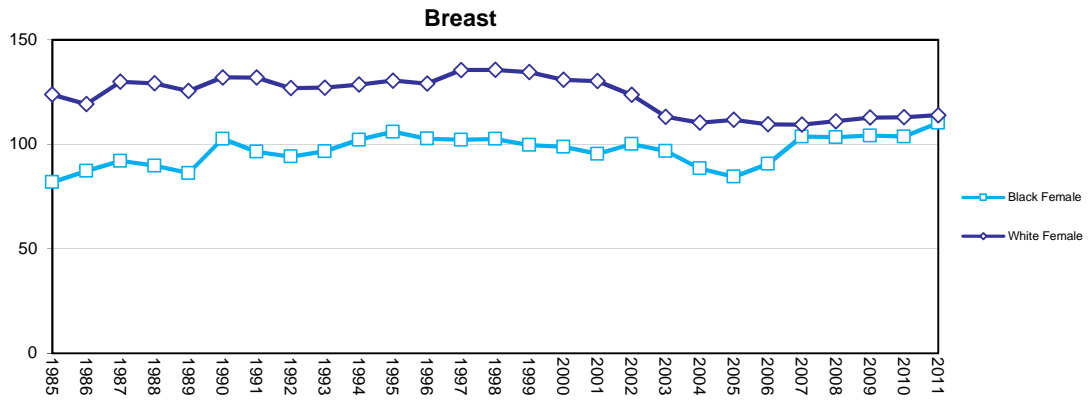
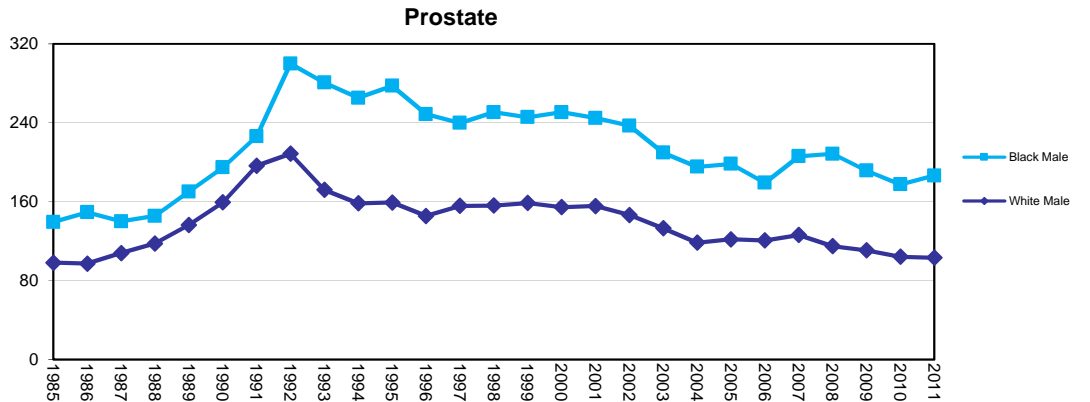
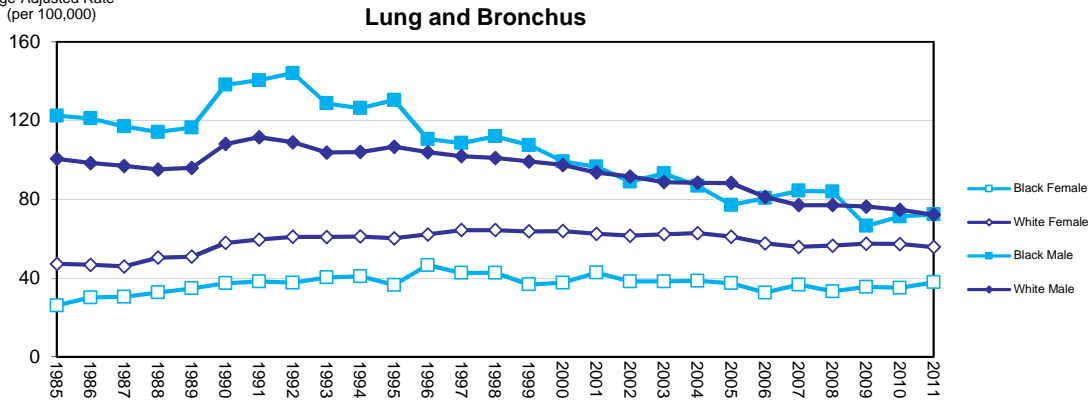


Graph 6.1 Age Adjusted Incidence Rates by Sex and Race, 1985-2011

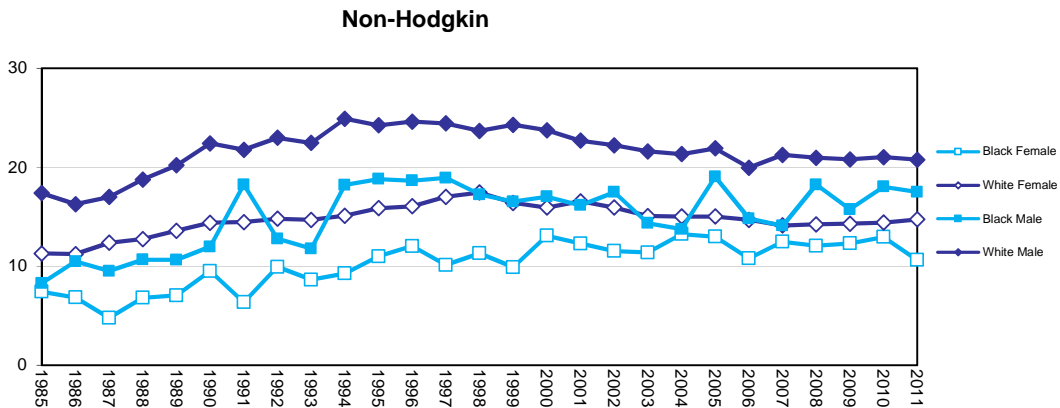
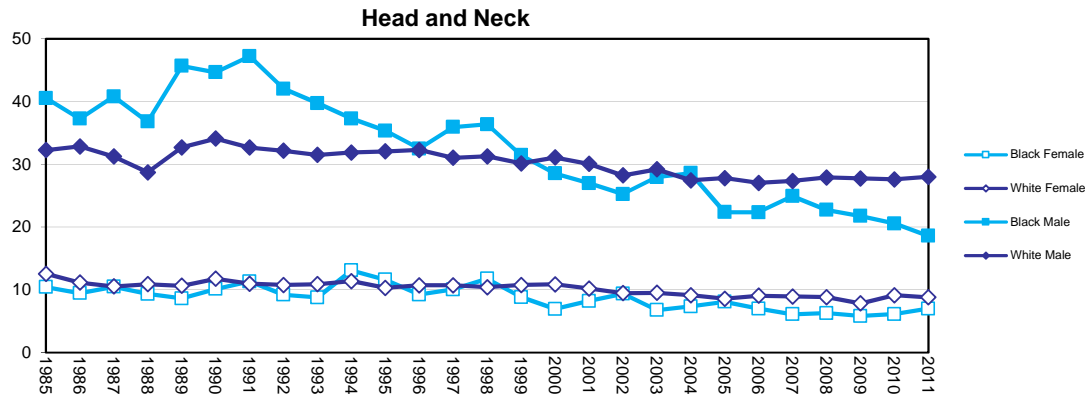
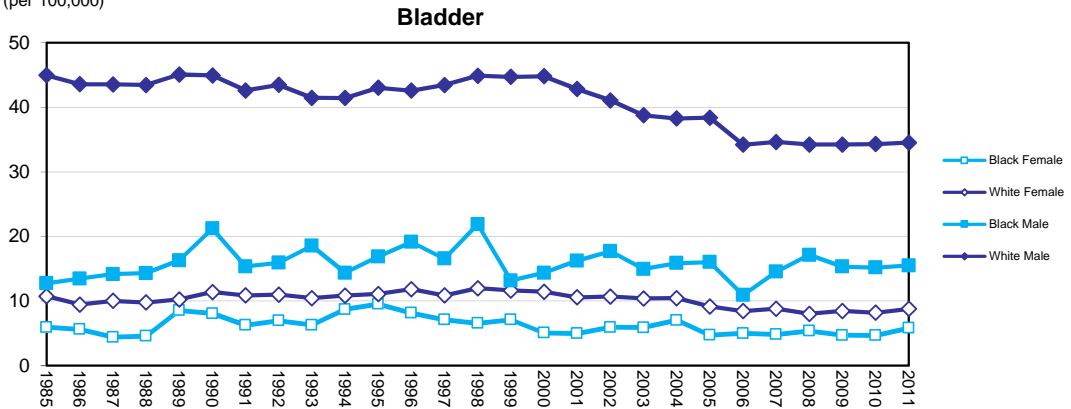
Age-Adjusted Rate
(per 100,000)



Source of data: Florida Cancer Data System

Graph 6.2 Age Adjusted Incidence Rates by Sex and Race, 1985-2011

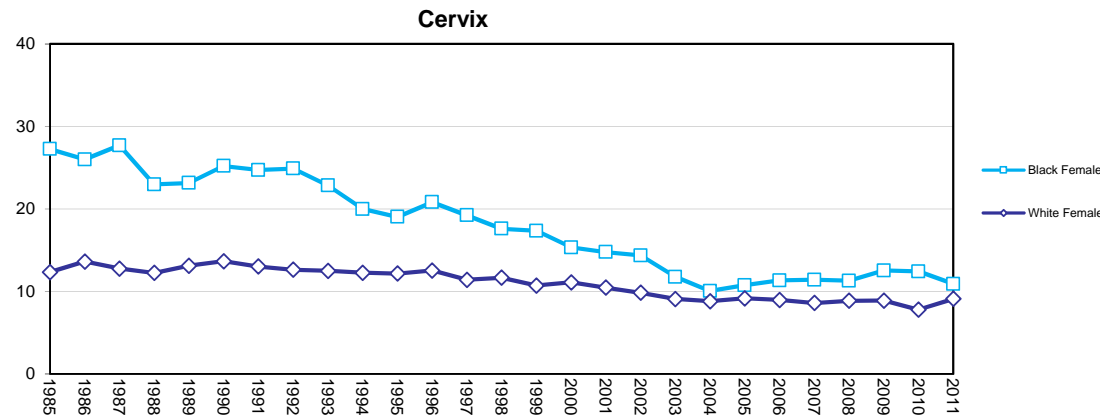
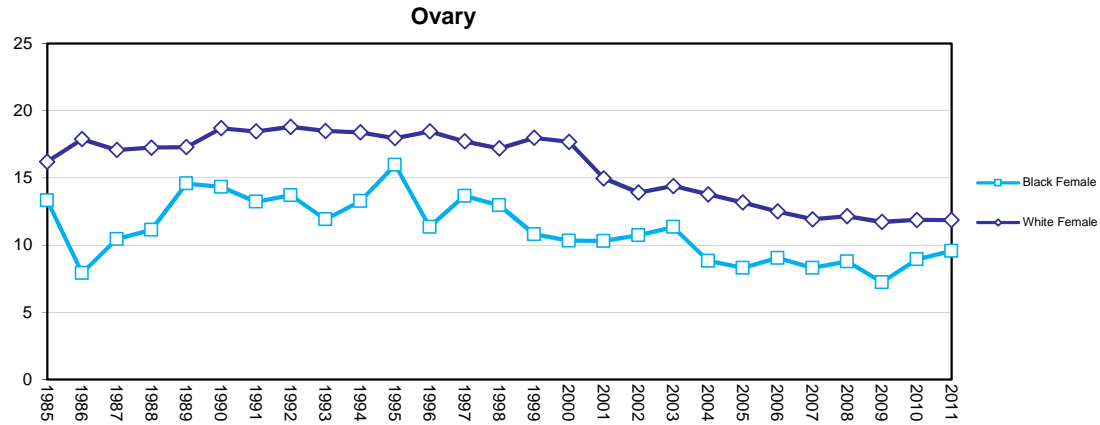
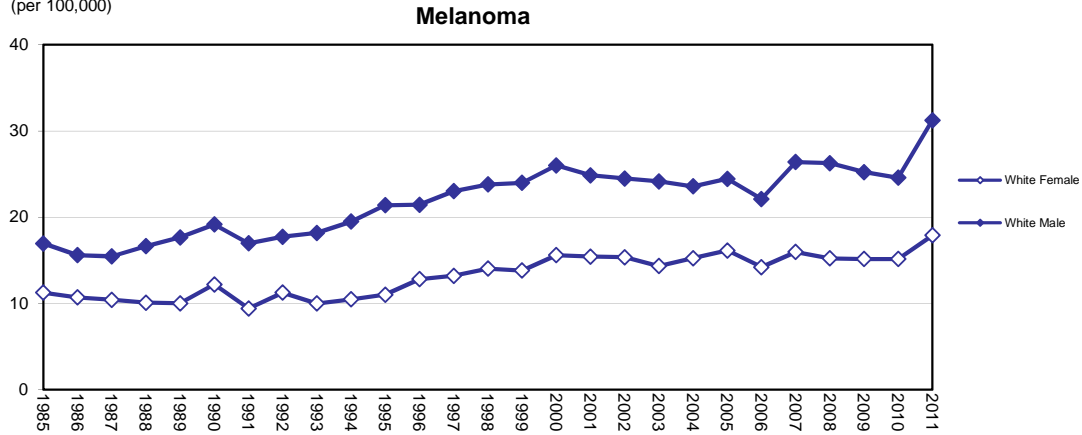
Age-Adjusted Rate
(per 100,000)



Source of data: Florida Cancer Data System

Graph 6.3 Age Adjusted Incidence Rates by Sex and Race, 1985-2011

Age-Adjusted Rate
(per 100,000)



Source of data: Florida Cancer Data System