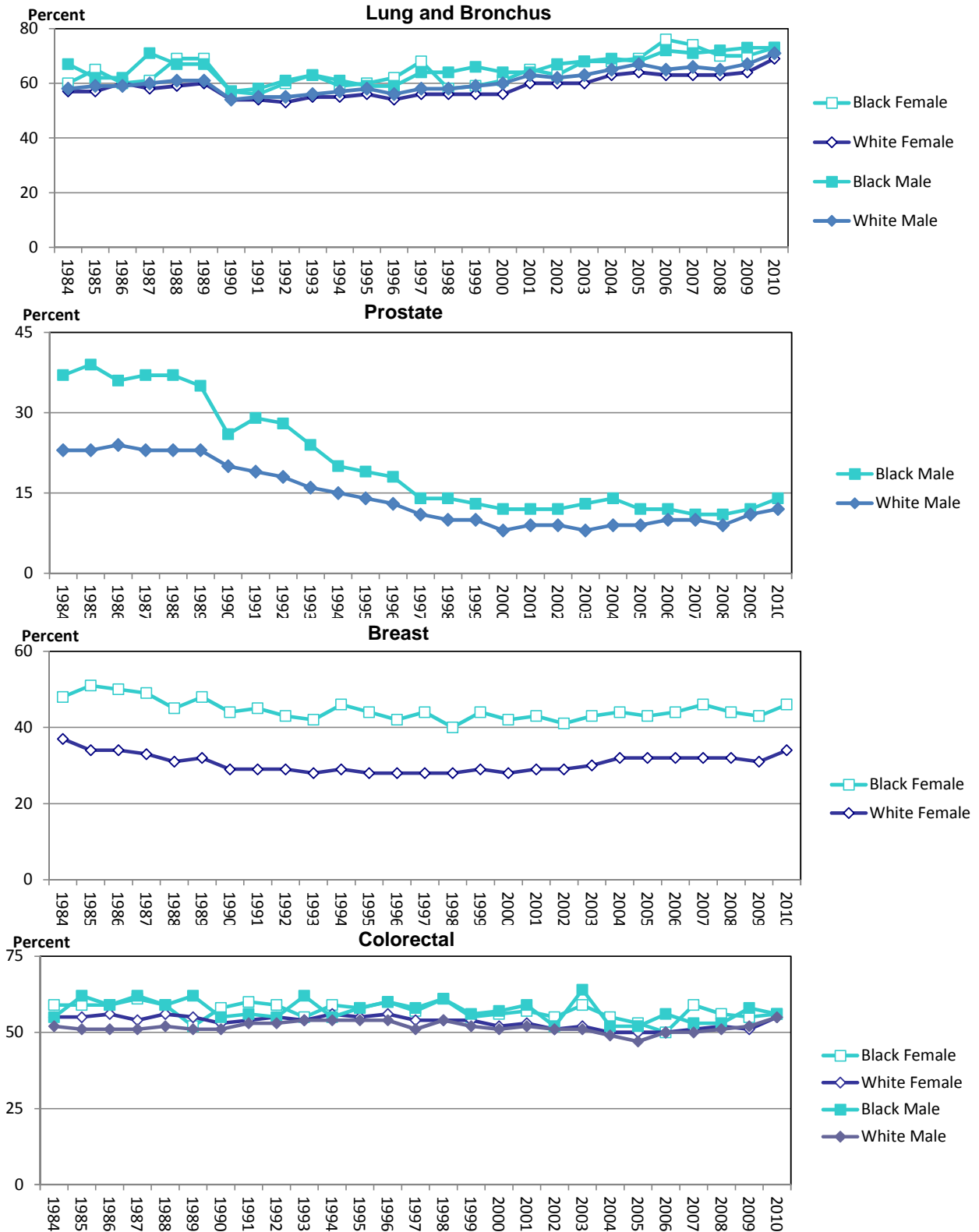


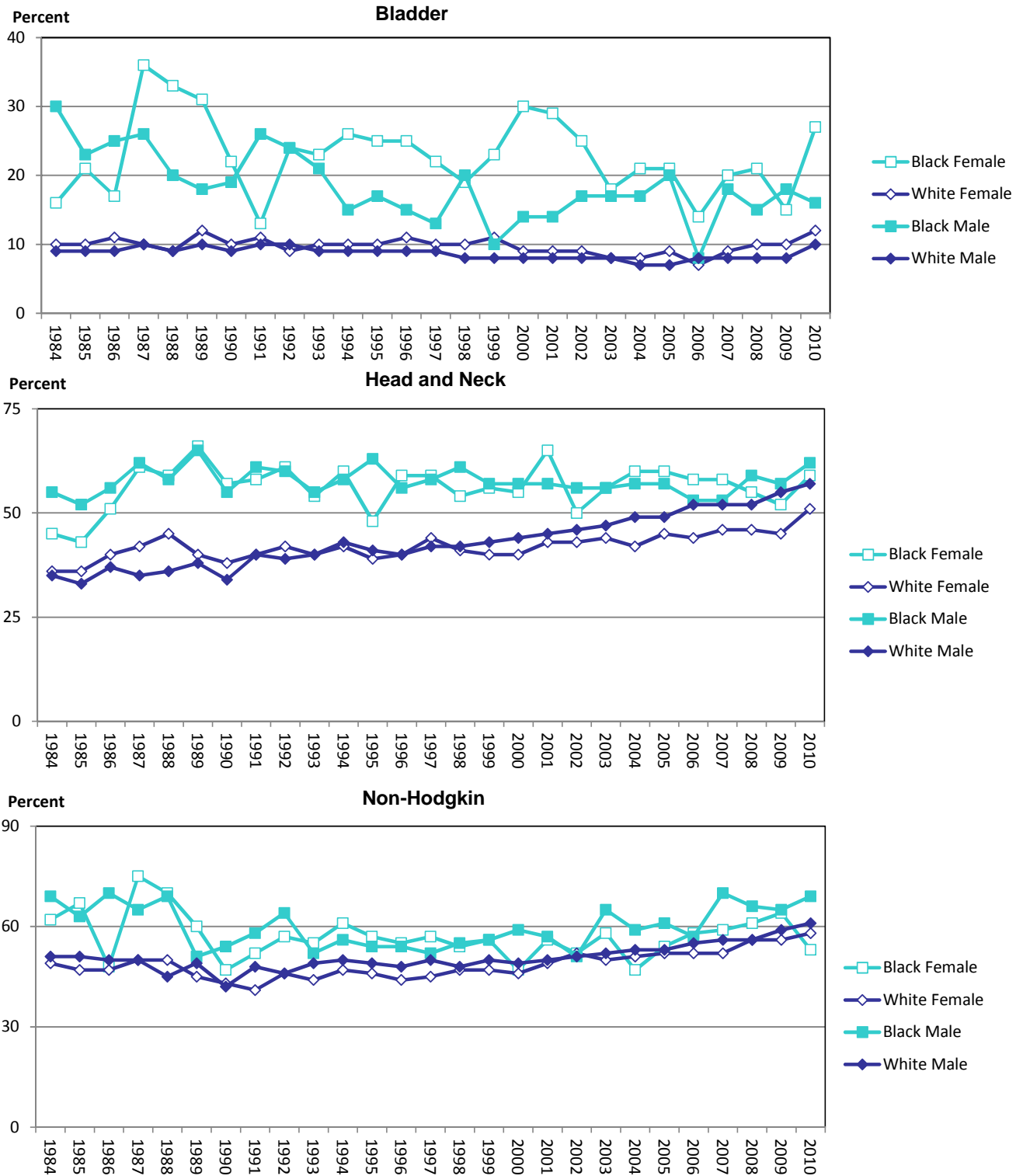
Graph 8.1 Percentage of Advanced Stage Cancer at Diagnosis by Sex and Race, 1984-2010



Advanced stage includes all regional and distant disease

Source of data: Florida Cancer Data System

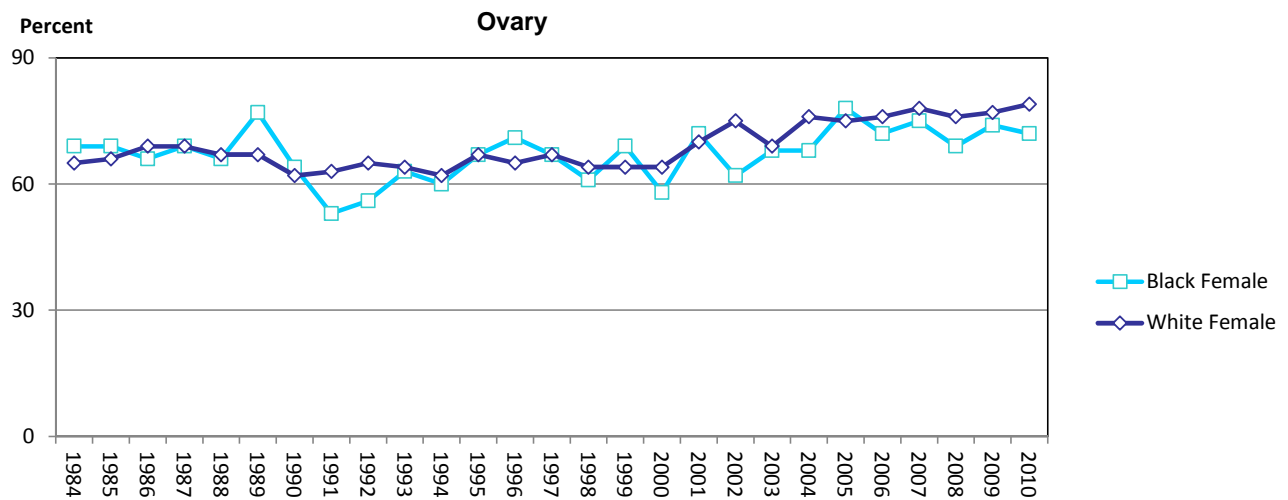
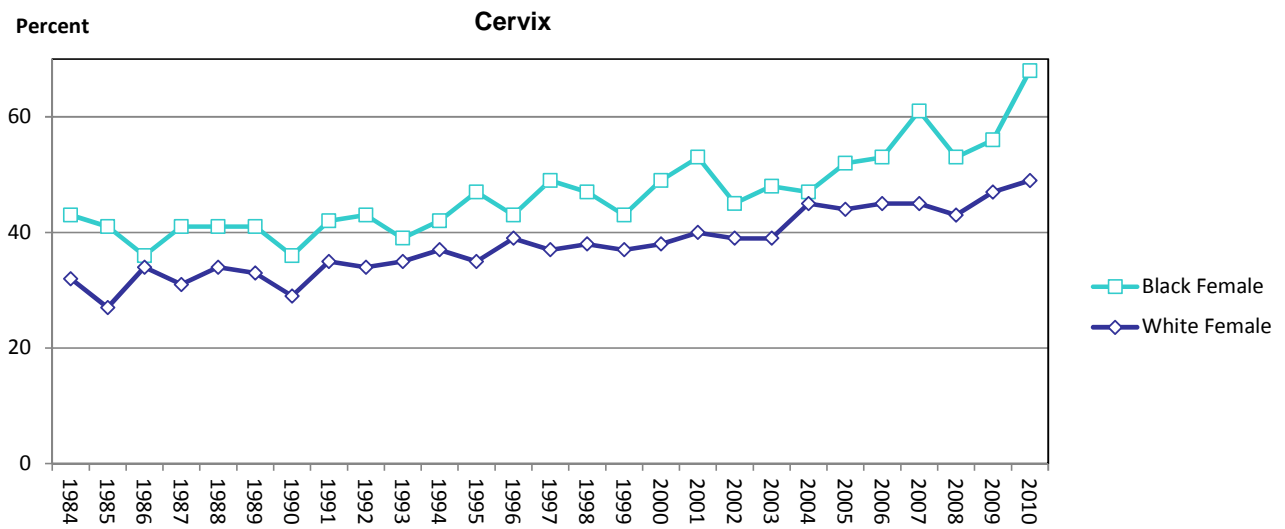
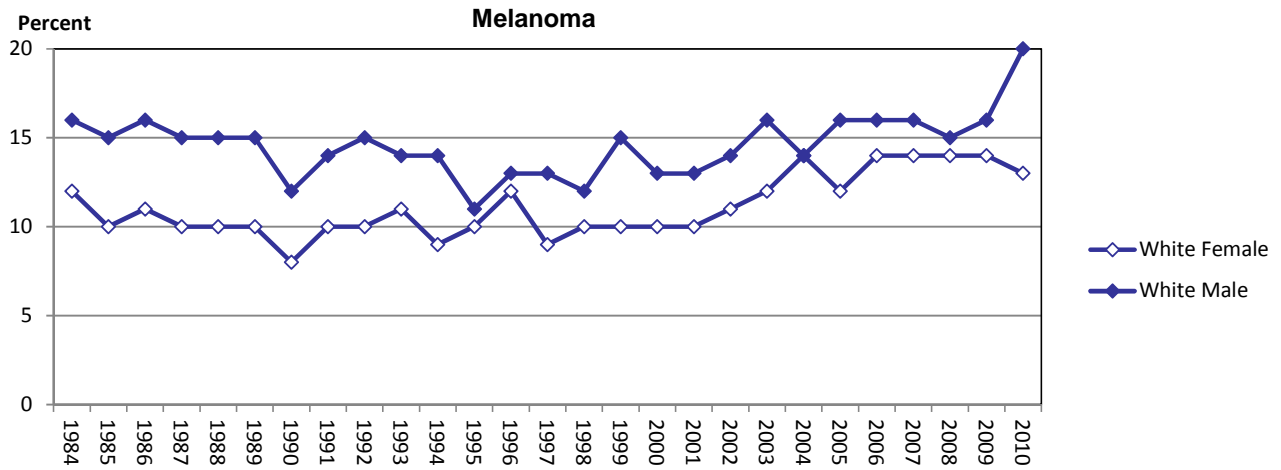
Graph 8.2 Percentage of Advanced Stage Cancer at Diagnosis by Sex and Race, 1984-2010



Advanced stage includes all regional and distant disease

Source of data: Florida Cancer Data System

Graph 8.3 Percentage of Advanced Stage Cancer at Diagnosis by Sex and Race, 1984-2010



Advanced stage includes all regional and distant disease

Source of data: Florida Cancer Data System