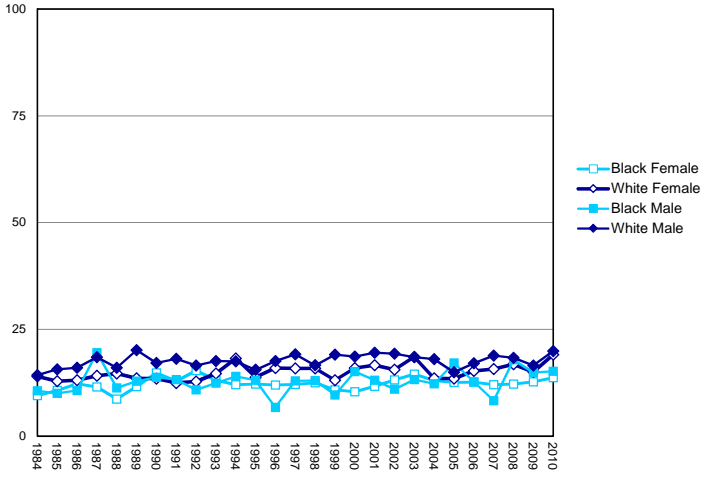


Figure 5. Age Specific Incidence Rates for All Cancers by Sex , Race and Age Group, Florida, 1984-2010

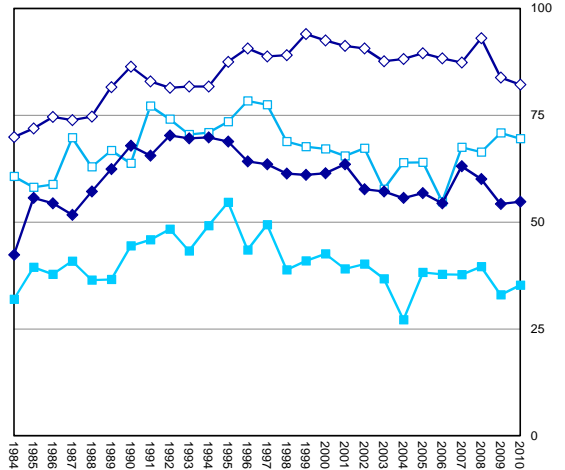
Age-Specific Rate
(per 100,000)

Age 0-14

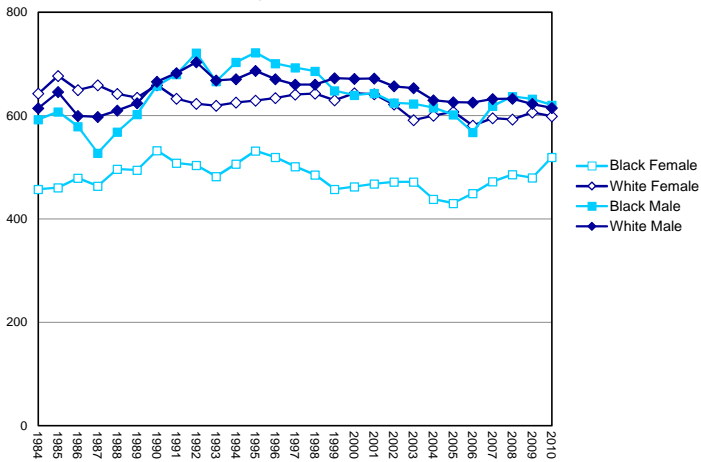


Age 15-39

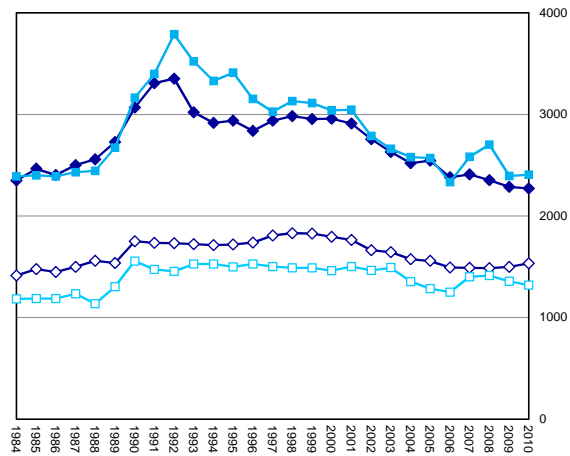
Age-Specific Rate
(per 100,000)



Age 40-64



Age 65 and Older



Source of data: Florida Cancer Data System