

FCDS Data Visualization Dashboards

Monique N. Hernandez, PhD
FCDS Annual Meeting
August 12th, 2021

Outline

Purpose of Data Visualization

Our approach to visualizing cancer data

Top ten cancers dashboard

Screenable cancers dashboard

Live demonstration

Purpose and Rationale

To provide public access to cancer data

To reach multiple audiences

To help answer questions the public may have about their communities

To prevent misinterpretation of the data

Statistics and Dashboard Webpage

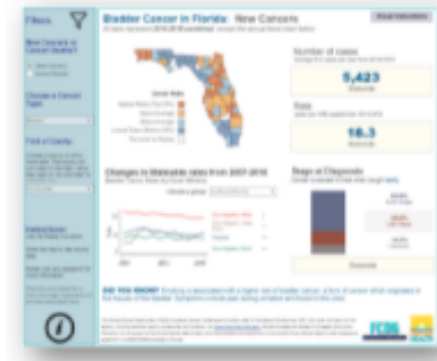
Statistics and Dashboards



Please contact Brad Wohler-Torres, brad_wohler-torres@miami.edu, (305) 243-5527 for the latest Incidence, Mortality, and Admission statistics. You can also log on to [FCDS IDEA](#) for FCDS Admission Counts by Facility/Site.

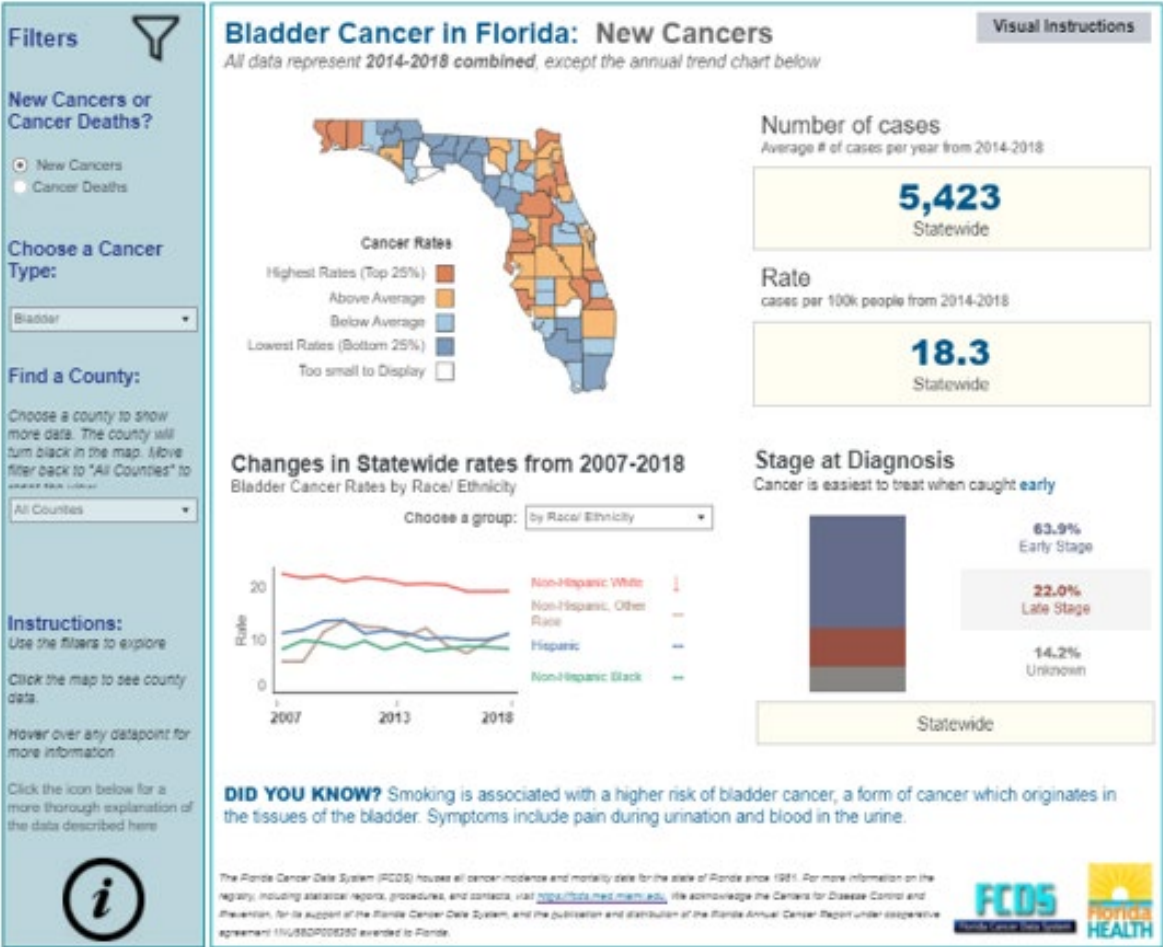
For more information regarding data in the following Florida Data Visualization and Cancer Screening Dashboards, please contact Monique Hernandez, mhernandez5@med.miami.edu.

Florida Data Visualization Dashboard

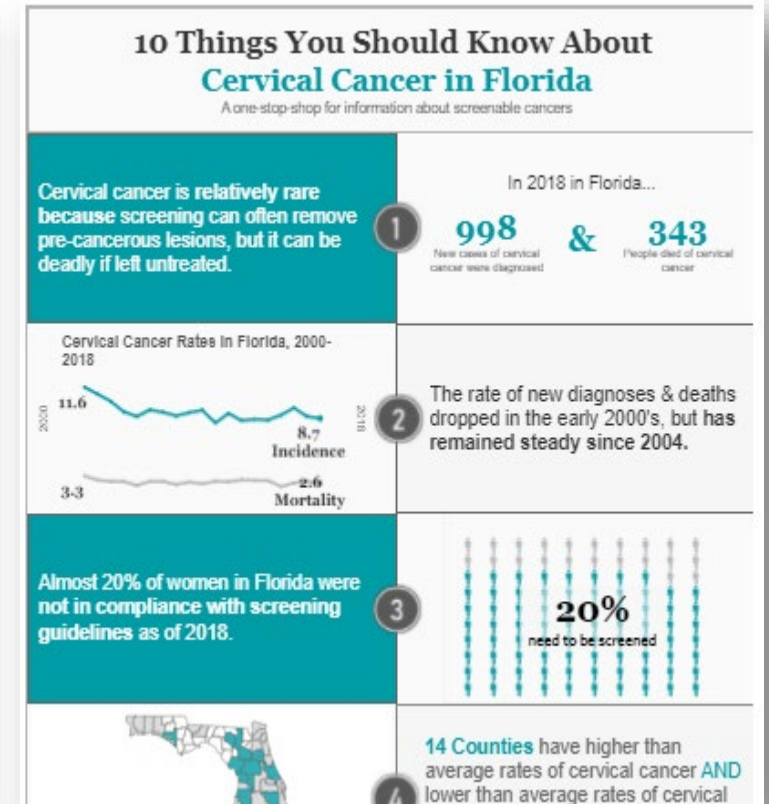
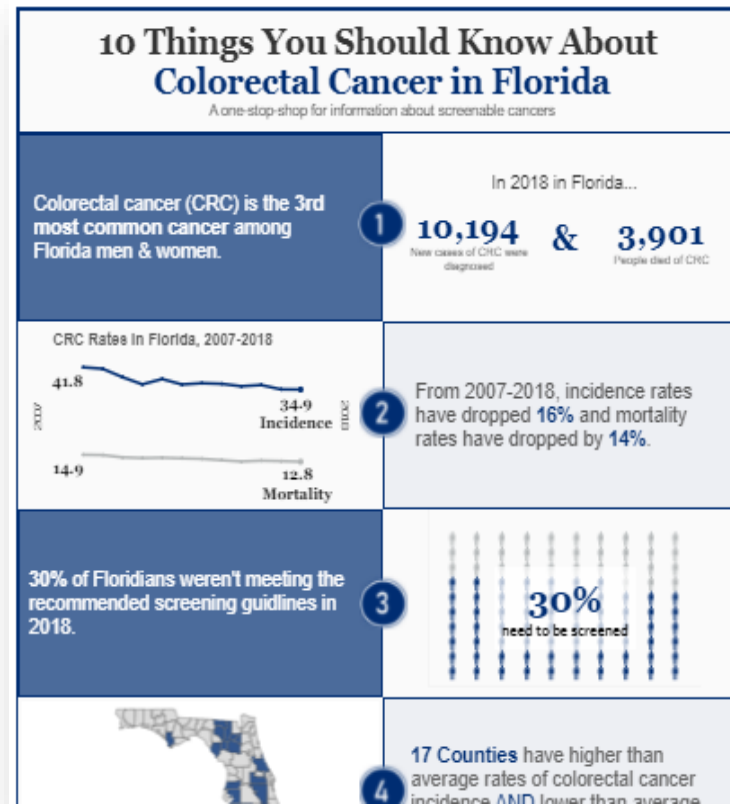
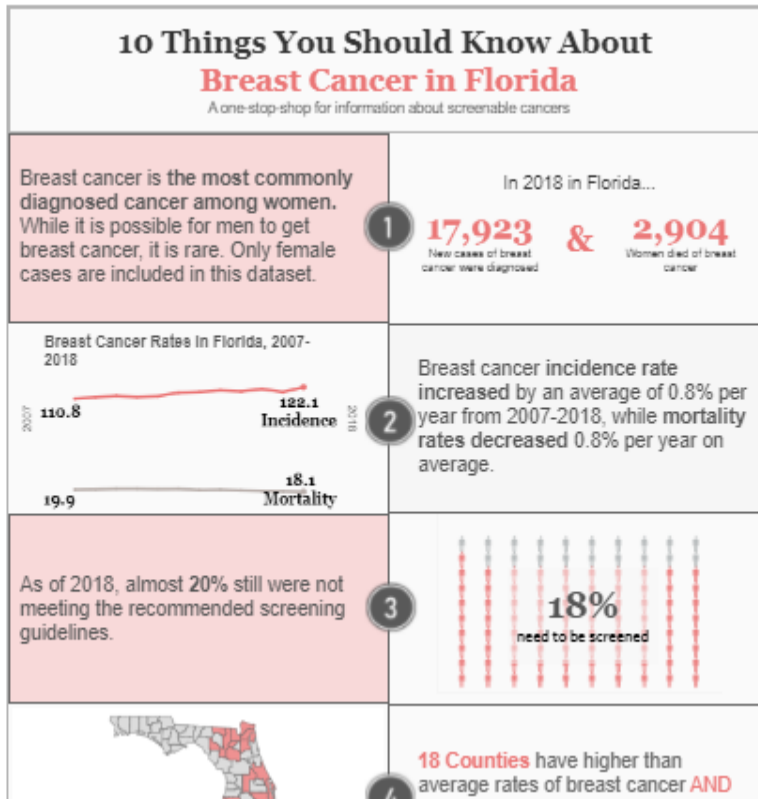


[Florida: Data Visualization](#)

Data Visualization Dashboard



Screenable Cancers Dashboards

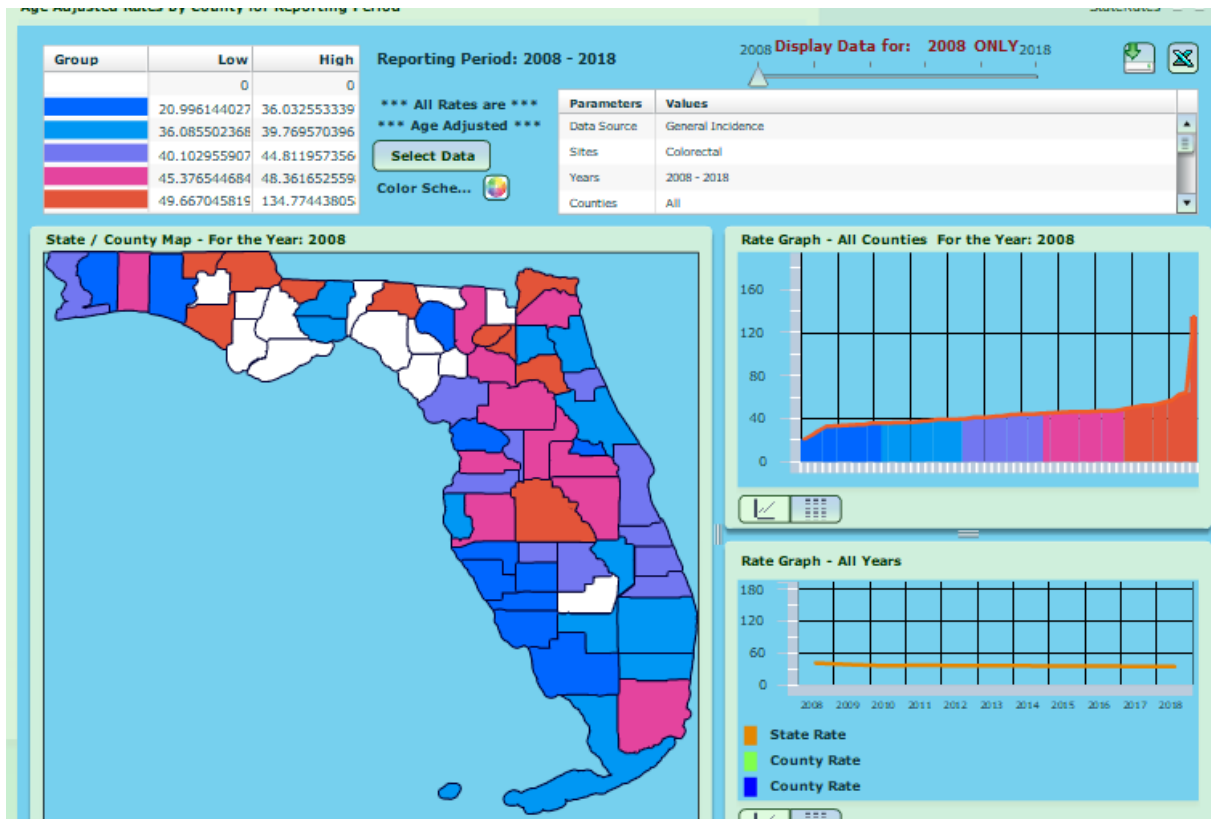


Live Demonstration



Incidence & Mortality Rates Inquiry Tool

Updates in Progress



Florida's Statewide Population-Based Cancer Registry

Age Adjusted Rates Calculated as of 02/15/2021

Select a Site Grouping or Pick Individual Sites...

Numeric Alphabetic

Custom Leukemia All Malignant Sites

Brain Head & Neck Hodgkins Lymphoma

Oral Colorectal non-Hodgkins Lymphoma

14-Cecum
15-Appendix
16-Ascending Colon
17-Hepatic Flexure
18-Transverse Colon

Data Source: General Incidence

Population Std: 2000 US Standard

Choose Races: White, Black, Other, Unknown

Choose Stages: In Situ, Local, Regional, Distant, Unknown

Choose Sexes: Male, Female, Unknown

Process



Thank you!

Monique N. Hernandez, PhD
mhernandez5@med.Miami.edu