

FLORIDA DEPARTMENT OF HEALTH

FLORIDA CANCER SCREENING SYSTEM PILOT PROJECT

Florida Cancer Data System Registry



Monique N. Hernandez, PhD
FCDS Virtual Annual Meeting
August 12th, 2021



Purpose and Rationale

Cancer Prevention & Control

Integration of screening data into routine cancer surveillance systems can create more robust data systems to inform cancer prevention and control activities

Early Detection Benefits

Early detection can prevent disease progression to advanced or invasive stage and is associated with improved treatment outcomes, higher survival rates, and reduced mortality

Surveillance Gaps

Surveillance data systems constitute the basis for the planning, implementation, and evaluation of public health programs. Screenings are not currently captured in FCDS

Screening Outcomes

As more cancer patients become cancer survivors, more information is needed by the medical community to improve quality of life for cancer survivors.

Methodology

Outreach

FDOH Partners and Clinics
Pilot Infographic



Database Development

Consolidation and Standardization



Analytics and Evaluation

Results via Data Visualization
Assess Feasibility



Data Collection and Validation

Florida Breast & Cervical Early
Detection Program,
Suncoast Community Health



Tumor Linkage

Patient and Tumor Linkage



Progress and Results

Data Reviews

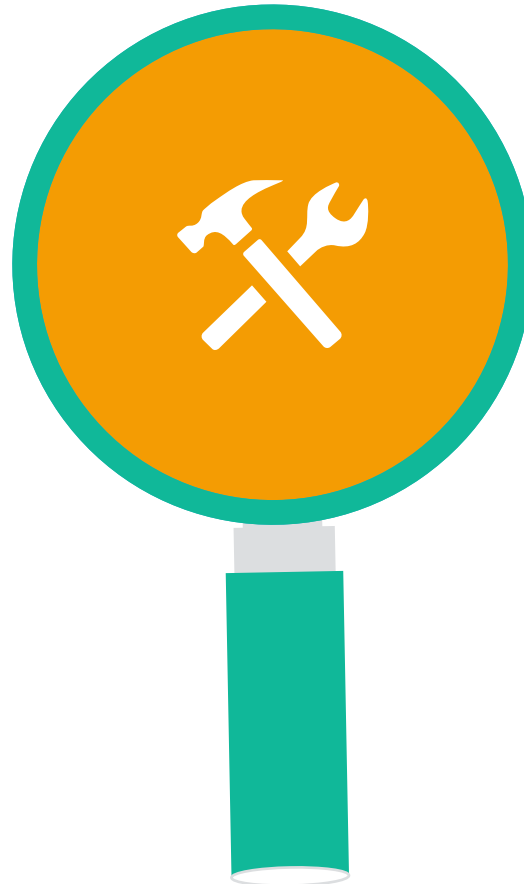


Completed data review and implemented ongoing QC of subsequent submissions

Ongoing Submission of Data



FBCCEDP 2009-2020 Annual
Suncoast 2019-2021 Quarterly



Consolidation Database

Developed business rules for importation
Limit to mammogram, CBE, pap test, HPV
Standardize text to code

Consolidated screenings and patients
across source

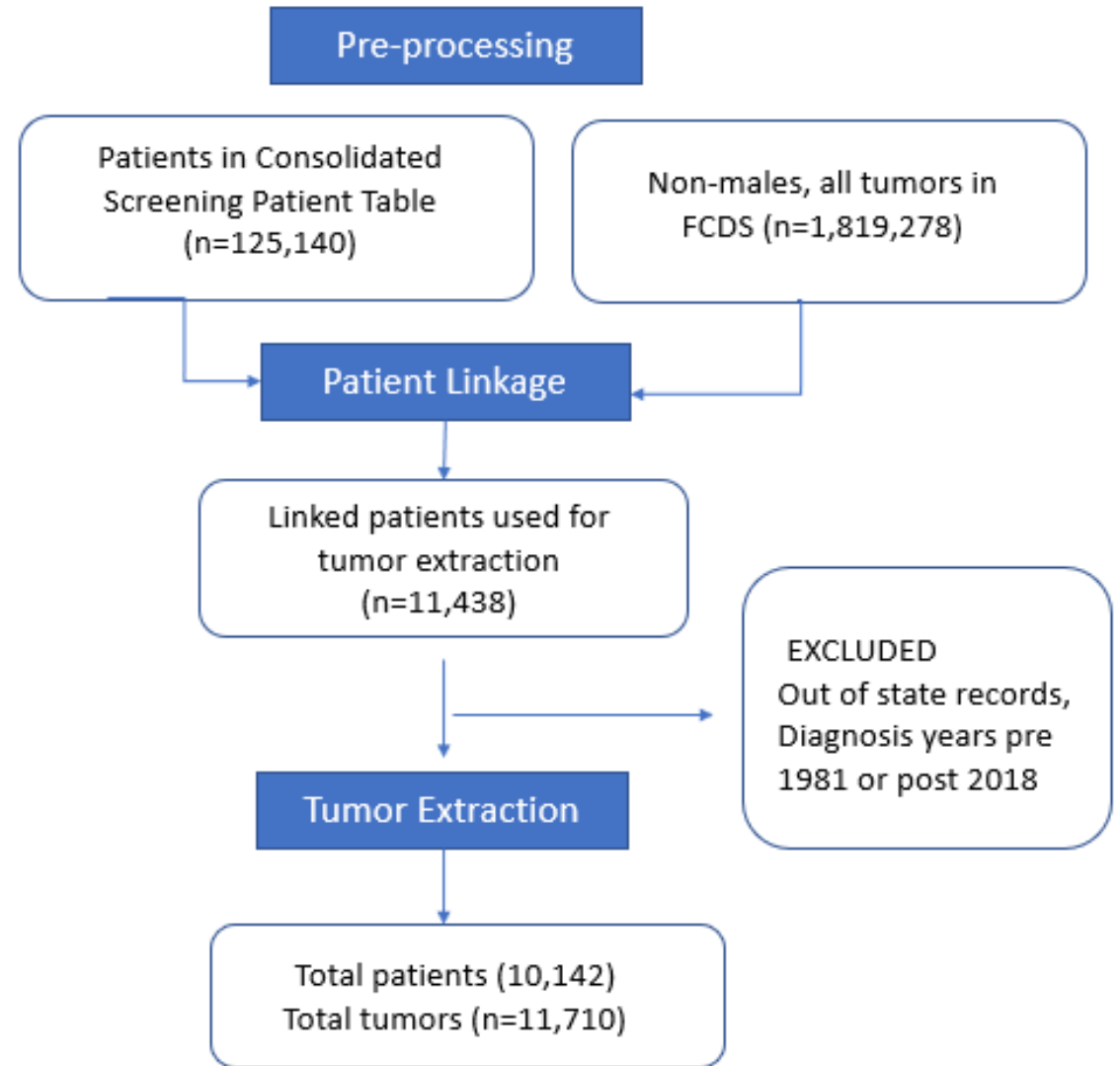


Tumor Linkage

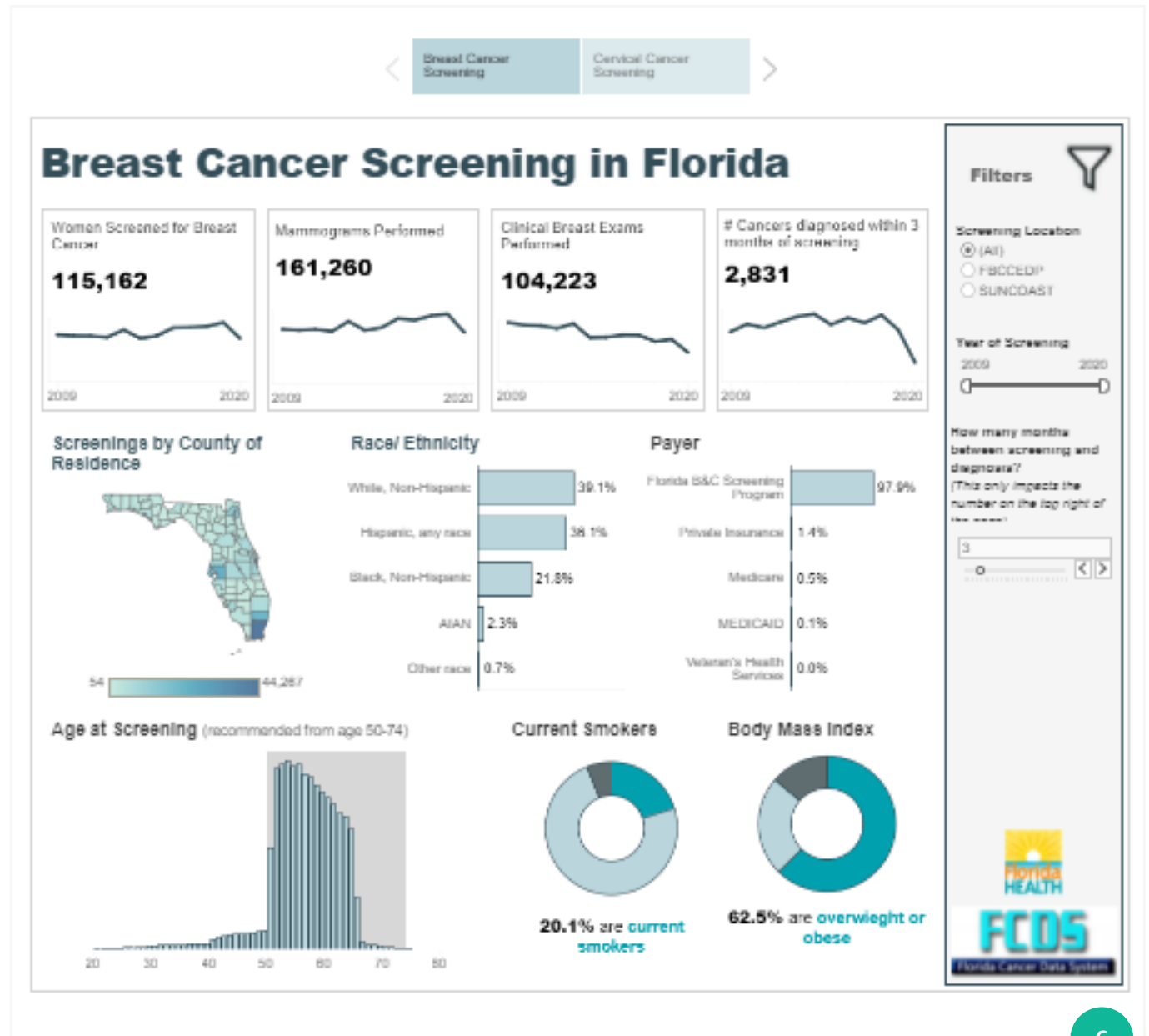
Extracted consolidated patients from
screening database and linked with Tumor
Registry



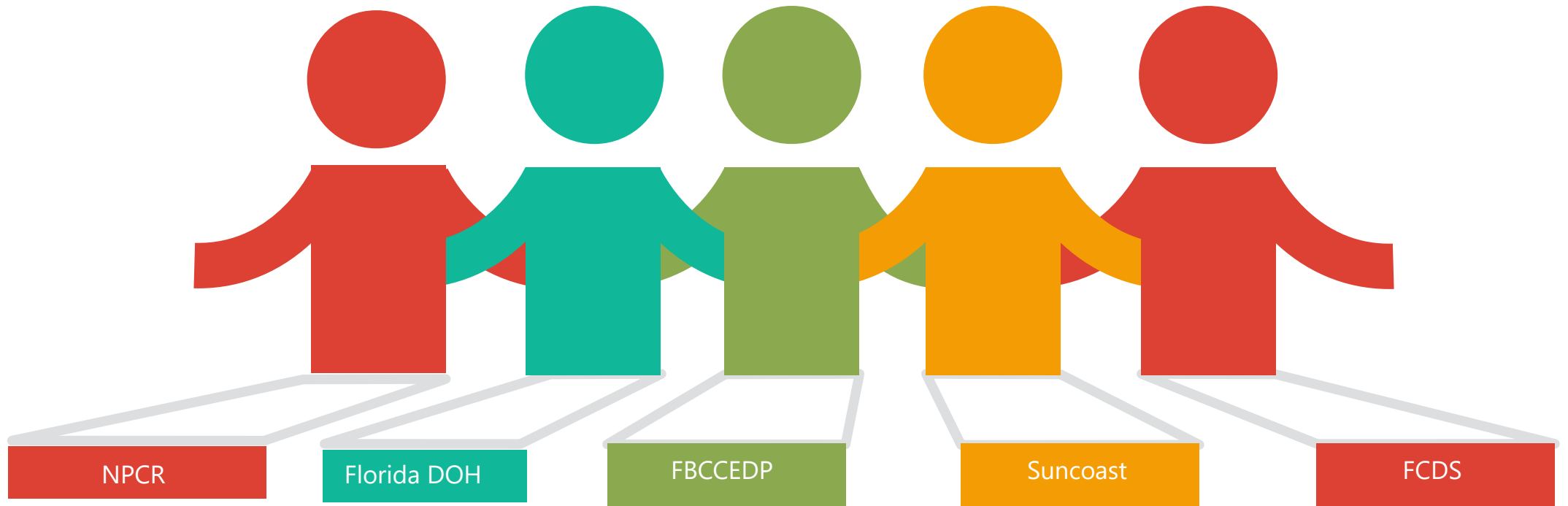
Tumor Linkage



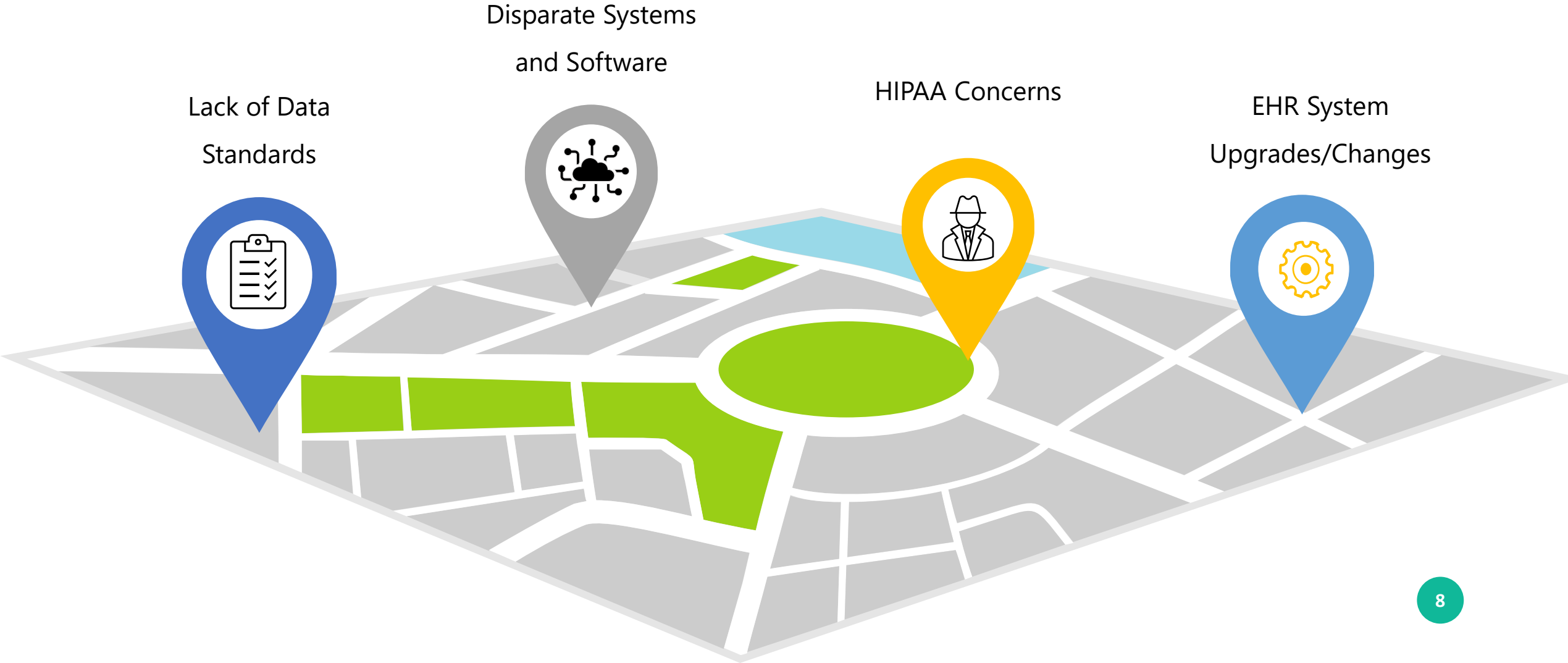
Data Visualization Dashboard



Partnerships



Navigating Challenges



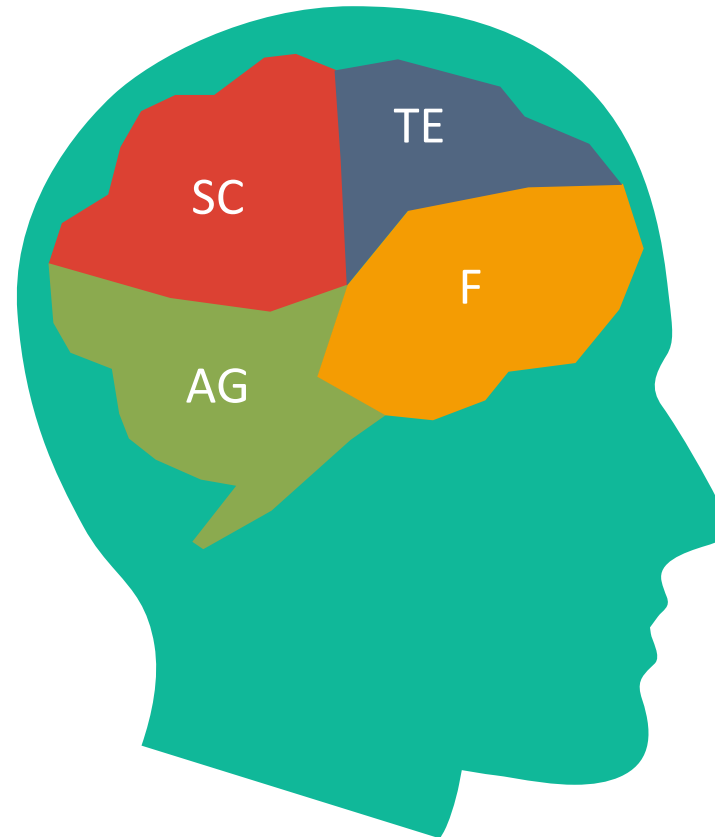
Lessons Learned and Best Practices

Support & Collaboration

Establish partnerships and support teams

Active Engagement

Obtain partner commitments and ongoing engagement



Technical Experts

Involving appropriate IT and data experts

Facilitators

Identify members that can support efforts and success

Year 5 Priorities

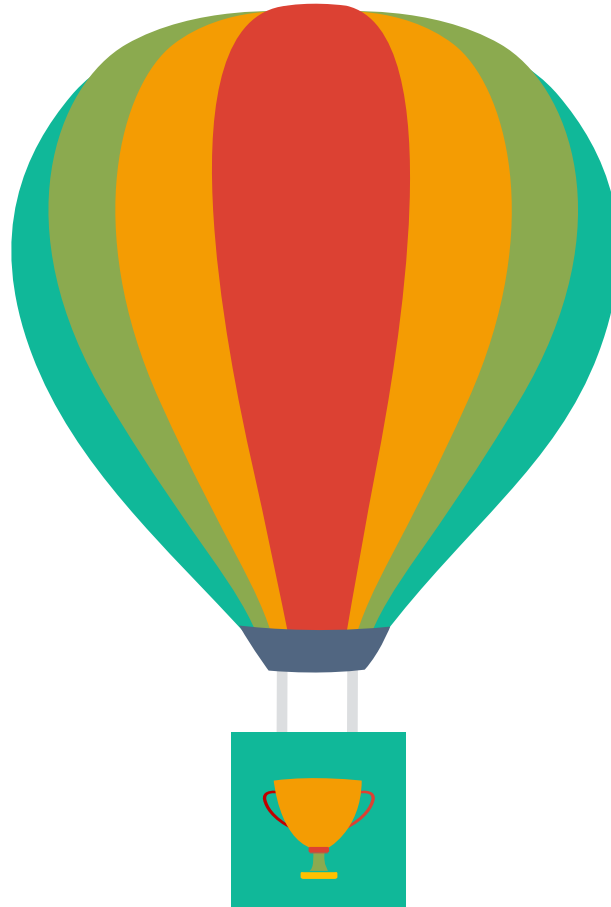
Sustain FBCCEDP Reporting



Sustain Suncoast Reporting



Expand to Broward and Putnam Counties



Pursue reporting of claims data



Maintain automated methodology for multi-source data integration



Maintain Data Visualization Dashboard

These Support Component I Activities



UNIVERSITY OF MIAMI
MILLER SCHOOL
of MEDICINE



THANK YOU

