

FCDS IDEA Follow Up System "A Refresher"

Gary M. Levin, CTR, BA
FCDS Annual Conference
July 26th, 2017



Facility Follow Up System Presentation Overview

- **Usage Statistics**
- **Concepts**
- **How to Use**



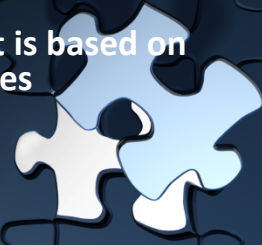
Facility Follow Up System Usage Statistics

Year	# Users	Requests
2014	23	215,155
2015	18	139,352
2016	17	334,776
2017	10	80,754
Total	68	770,037
Unique Users	43	



Facility Follow Up System Concepts

- Purpose: Assist Facilities with Patient Follow Up
- Facility Provides Facility, Accession, Sequence #
- System Validates and Returns Consolidated Patient and Tumor Information for the requested cases
- Results can vary from facility case since it is based on consolidation from many reporting sources



Facility Follow Up System Concepts - Input

NAACCR Data Item	Field Name
540	Reporting Facility
550	Accession Number--Hosp
560	Sequence Number--Hosp



Facility Follow Up System Concepts - Output

NAACCR Data Item	Field Name
390	Date of Diagnosis
400	Primary Site
410	Laterality
522	Histologic Type ICD-O-3
523	Behavior Code ICD-O-3
540	Reporting Facility
550	Accession Number—Hosp
560	Sequence Number—Hosp



Facility Follow Up System Concepts - Output

NAACCR Data Item	Field Name
1200	RX Date--Surgery
1201	RX Date--Surgery Flag
1210	RX Date--Radiation
1211	RX Date--Radiation Flag
1220	RX Date--Chemo
1221	RX Date--Chemo Flag
1230	RX Date--Hormone
1231	RX Date--Hormone Flag
1240	RX Date--BRM
1241	RX Date--BRM Flag
1250	RX Date--Other
1251	RX Date--Other Flag

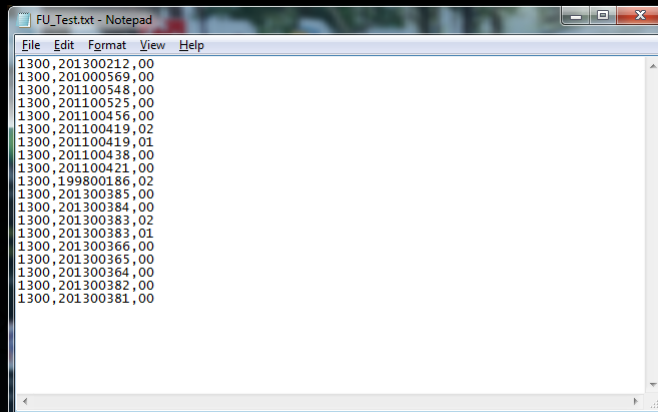
Facility Follow Up System Concepts - Output

NAACCR Data Item	Field Name
1290	RX Summ--Surg Prim Site
1292	RX Summ--Scope Reg LN Sur
1294	RX Summ--Surg Oth Reg/Dis
1340	Reason for No Surgery
1360	RX Summ--Radiation
1380	RX Summ--Surg/Rad Seq
1390	RX Summ--Chemo
1400	RX Summ--Hormone
1410	RX Summ--BRM
1420	RX Summ--Other
1430	Reason for No Radiation

Facility Follow Up System Concepts - Output

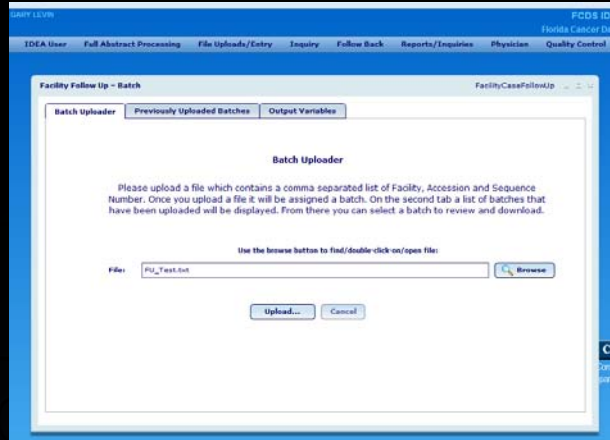
NAACCR Data Item	Field Name
1570	Rad--Regional RX Modality
1639	RX Summ--Systemic/Sur Seq
1750	Date of Last Contact
1751	Date of Last Contact Flag
1760	Vital Status
1770	Cancer Status
3250	RX Summ--Transplnt/Endocr

Facility Follow Up System How To Use – Input File

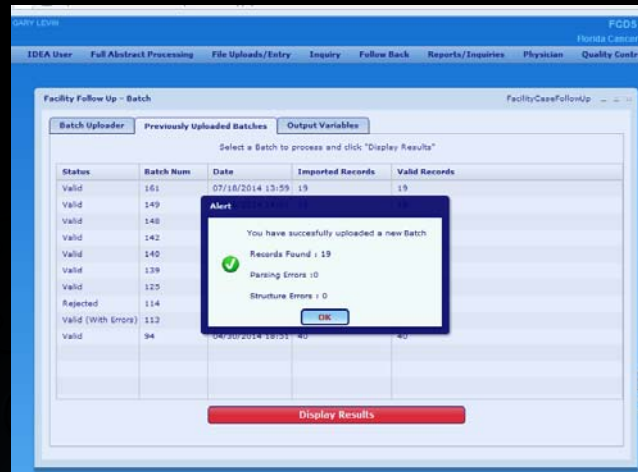


```
File Edit Format View Help
1300,201300212,00
1300,201000569,00
1300,201100548,00
1300,201100525,00
1300,201100456,00
1300,201100419,02
1300,201100419,01
1300,201100438,00
1300,201100421,00
1300,199800186,02
1300,201300385,00
1300,201300384,00
1300,201300383,02
1300,201300383,01
1300,201300366,00
1300,201300365,00
1300,201300364,00
1300,201300382,00
1300,201300381,00
```

Facility Follow Up System How To Use



Facility Follow Up System How To Use



Facility Follow Up System How To Use

The screenshot shows the 'Facility Follow Up - Batch' window with the 'Batch Uploader' tab selected. A table displays the results of batch uploads, including status, batch number, date, imported records, and valid records. A red 'Display Results' button is located at the bottom of the table.

Status	Batch Num	Date	Imported Records	Valid Records
Valid	161	07/18/2014 13:59	19	19
Valid	149	06/26/2014 14:07	19	19
Valid	148	06/26/2014 13:43	18	19
Valid	142	05/29/2014 14:20	19	19
Valid	140	05/27/2014 11:25	19	19
Valid	139	05/23/2014 12:25	19	19
Valid	123	05/14/2014 13:08	19	19
Rejected	114	05/07/2014 12:40	13	10
Valid (With Errors)	113	05/07/2014 12:33	12	10
Valid	94	04/30/2014 10:51	40	40

Facility Follow Up System How To Use

The screenshot shows the 'Facility Follow Up - Batch' window with the 'Batch Uploader' tab selected. A detailed table displays case information, including facility, accession, sequence, diagnosis date, primary site, morphology, and behavior. Export buttons for Excel, CSV, and Tab Delimited are visible at the bottom.

Status	Facility	Accession	Sequence	Diagnosis Date	Primary Site	Morphology	Behavior
Case NOT at FCDS	1300	999900219	00				
Case NOT at FCDS	1300	201300400	02				
Valid	1505	201300232	00	20130014	C541	9280	3
Valid	1505	201300179	02	20130434	C341	8140	3
Valid	1300	201300385	00	20130926	C619	8140	3
Valid	1300	201300384	00	20130902	C421	9841	3
Valid	1505	201300332	02	20130808	C508	8522	2
Valid	1300	201300219	00	20101213	C421	9722	3
Valid	1300	201300383	02	20130626	C619	8140	3

Facility Follow Up System How To Use

Status	Facility	Accession	Sequence	Diagnosis Date	Primary Site	Morphology	Behavior	Later
Valid	1300	201100456	00	20111130	C321	8071	3	0
Valid	1300	201300264	00	20130901	C341	8070	3	2
Valid	1300	201300362	00	20130910	C739	8260	3	0
Valid	1300	201100525	00	20110927	C340	8000	3	2
Valid	1300	201300381	00	20130827	C503	8320	3	1
Valid	1300	201300212	00	20130401	C341	8070	3	1
Valid	1300	201100548	00	20110830	C619	8140	3	0
Valid	1300	201100419	01	19700615	C541	8000	3	0
Valid	1300	201300363	00	20130828	C138	8070	3	0
Valid	1300	201000959	00	20100513	C669	8120	3	2
Valid	1300	201100419	02	20040915	C779	5680	3	0
Valid	1300	201100421	00	20111020	C809	8140	3	0
Valid	1300	201300383	00	20130926	C619	8140	3	0

Facility Follow Up System How To Use - Excel Format

Header	Facility	Accession	Sequence	Diagnosis Date	Primary Site	Morphology	Behavior	Laterality	Date Last Contact	Vital Status	Cancer Status	
1	Valid	1300	201100456	0	20111130	C321	8071	3	0	20111215	0	2
2	Valid	1300	201300264	0	20130901	C341	8070	3	2	20130824	1	1
3	Valid	1300	201300362	0	20130910	C739	8260	3	0	20130916	1	1
4	Valid	1300	201100525	0	20110927	C340	8000	3	2	20111110	0	2
5	Valid	1300	201300381	0	20130827	C503	8320	3	1	20130913	1	1
6	Valid	1300	201300212	0	20130401	C341	8070	3	1	20100829	0	2
7	Valid	1300	201100548	0	20110830	C619	8140	3	0	20111227	0	1
8	Valid	1300	201100419	1	19700615	C541	8000	3	0	20111127	0	1
9	Valid	1300	201300363	0	20130828	C138	8070	3	0	20130926	1	2
10	Valid	1300	201000959	0	20100513	C669	8120	3	2	20100916	0	2
11	Valid	1300	201100419	2	20040915	C779	5680	3	0	20111127	0	2
12	Valid	1300	201100421	0	20111020	C809	8140	3	0	20111029	0	2
13	Valid	1300	201300383	0	20130926	C619	8140	3	0	20130926	1	1
14	Valid	1300	201300384	0	20130926	C619	8140	3	0	20130926	1	2
15	Valid	1300	199601086	2	20101079	C420	9423	3	0	20130911	1	2
16	Valid	1300	201300438	0	2011021	C341	8041	3	1	20111130	0	2
17	Valid	1300	201300383	2	20130926	C619	8140	3	0	20111211	1	1
18	Valid	1300	201300383	1	1389	8000	3	0	20111211	1	1	
19	Valid	1300	201300384	0	20121215	C308	8000	3	2	20111215	1	2

Facility Follow Up System How To Use – Single Case Inquiry

Facility Follow Up Inquiry

Medical Facility

Accession Number Sequence Number

Patient Information

Name SON Sex

Date of Birth Race

Vital Status Last Contact Flag

Date of DX

Primary Site Histology Behavior Laterality

Surgery Primary Site Surgery Date Flag

Scope Reg LH Surgery

Surg Other Reg/Distant

Reason for No Surgery

Radiation RX Date Flag

Reason No Radiation Regional KX Modality

Surg/Rad Seq

Chemo RX Date Flag

Hormone RX Date Flag

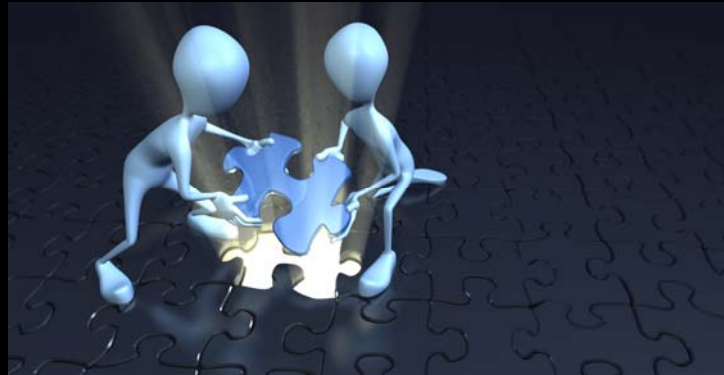
BRM RX Date Flag

Trans/Endo RX Date Flag

Other RX Date Flag

Systemic Surg Seq

Cancer Status



Thank You

FCDS Florida Cancer Data System
A JOINT PROJECT OF THE SYLVESTER COMPREHENSIVE CANCER CENTER AND THE FLORIDA DEPARTMENT OF HEALTH

