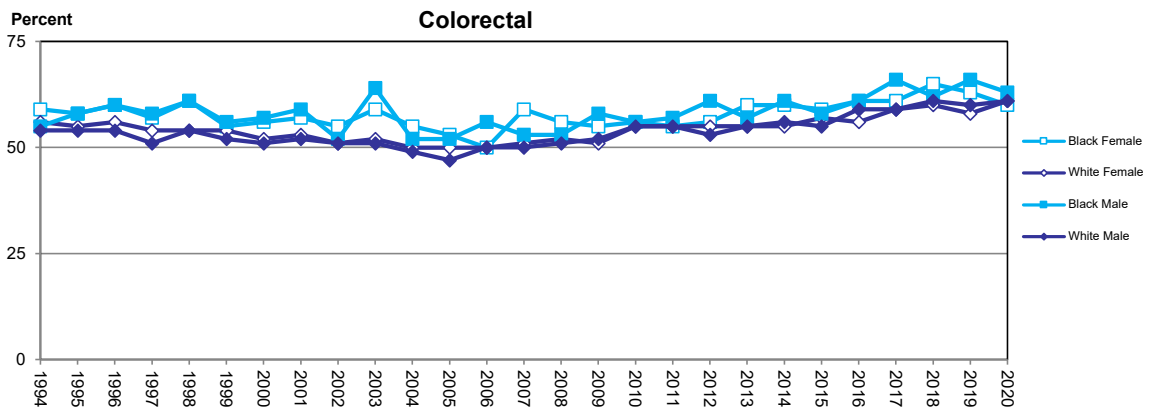
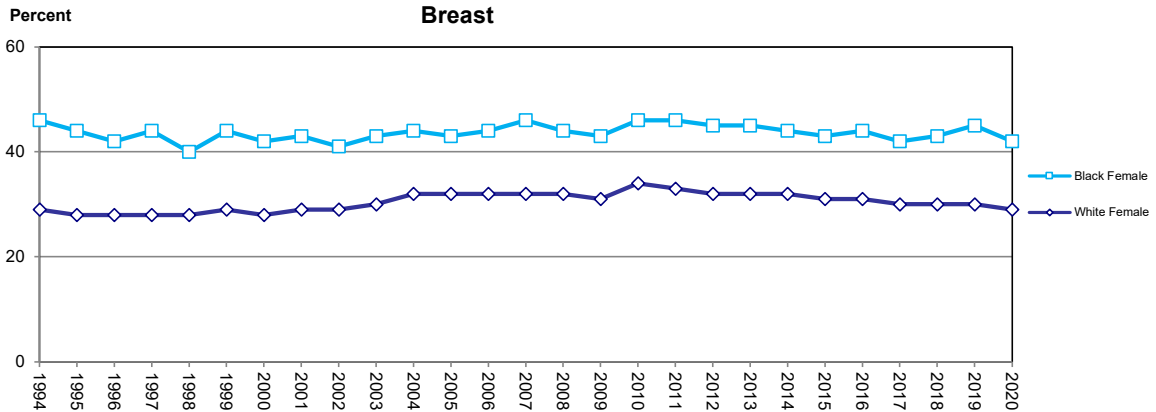
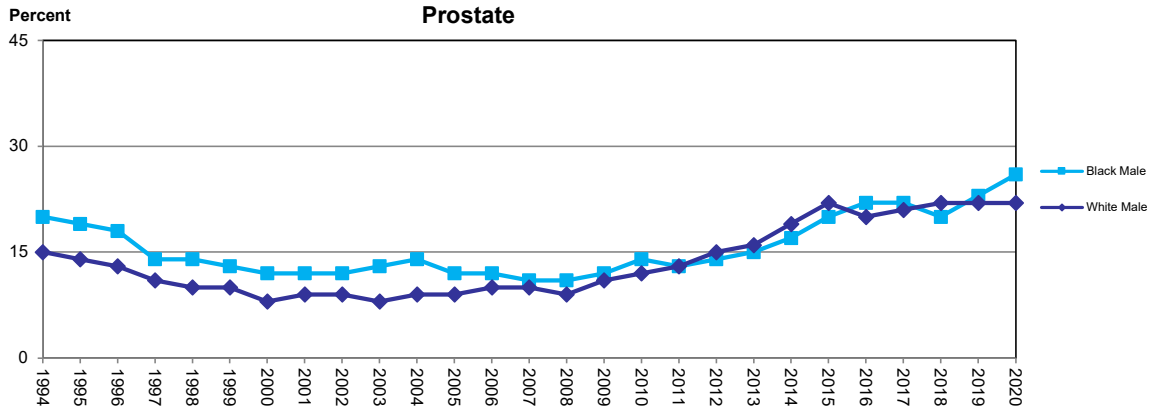
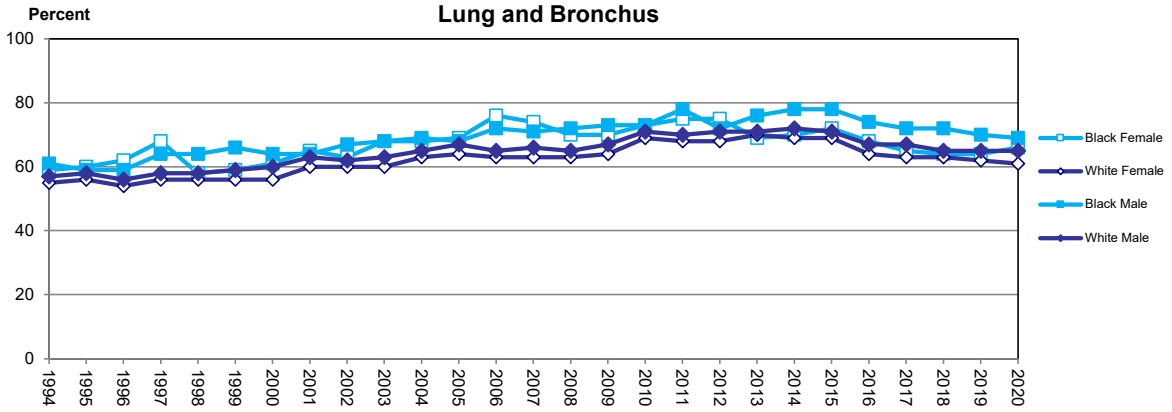


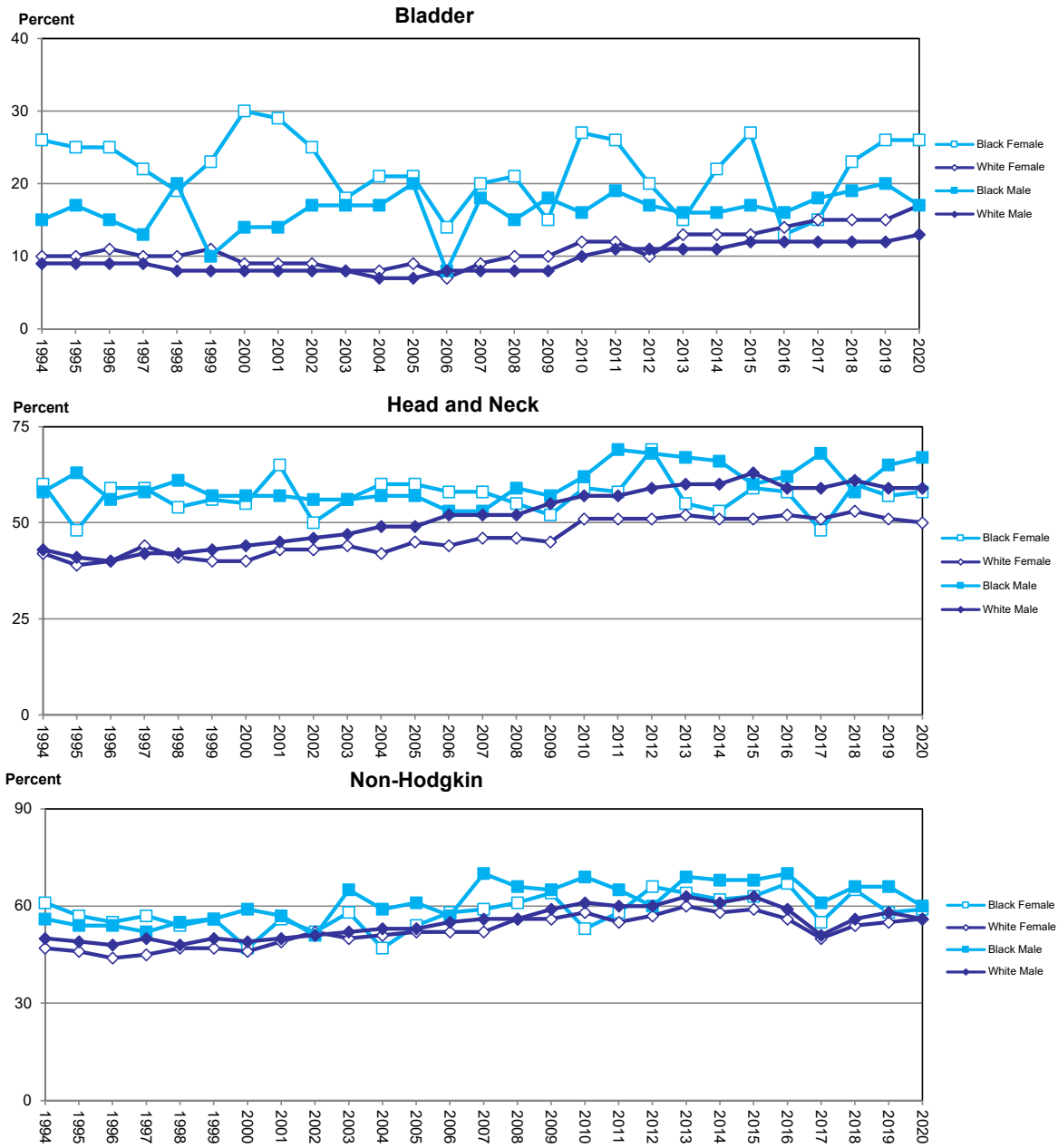
Figure 8.1 Percentage of Advanced Stage Cancer at Diagnosis by Sex and Race, 1994-2020



Advanced stage includes all regional and distant disease

Source of data: Florida Cancer Data System

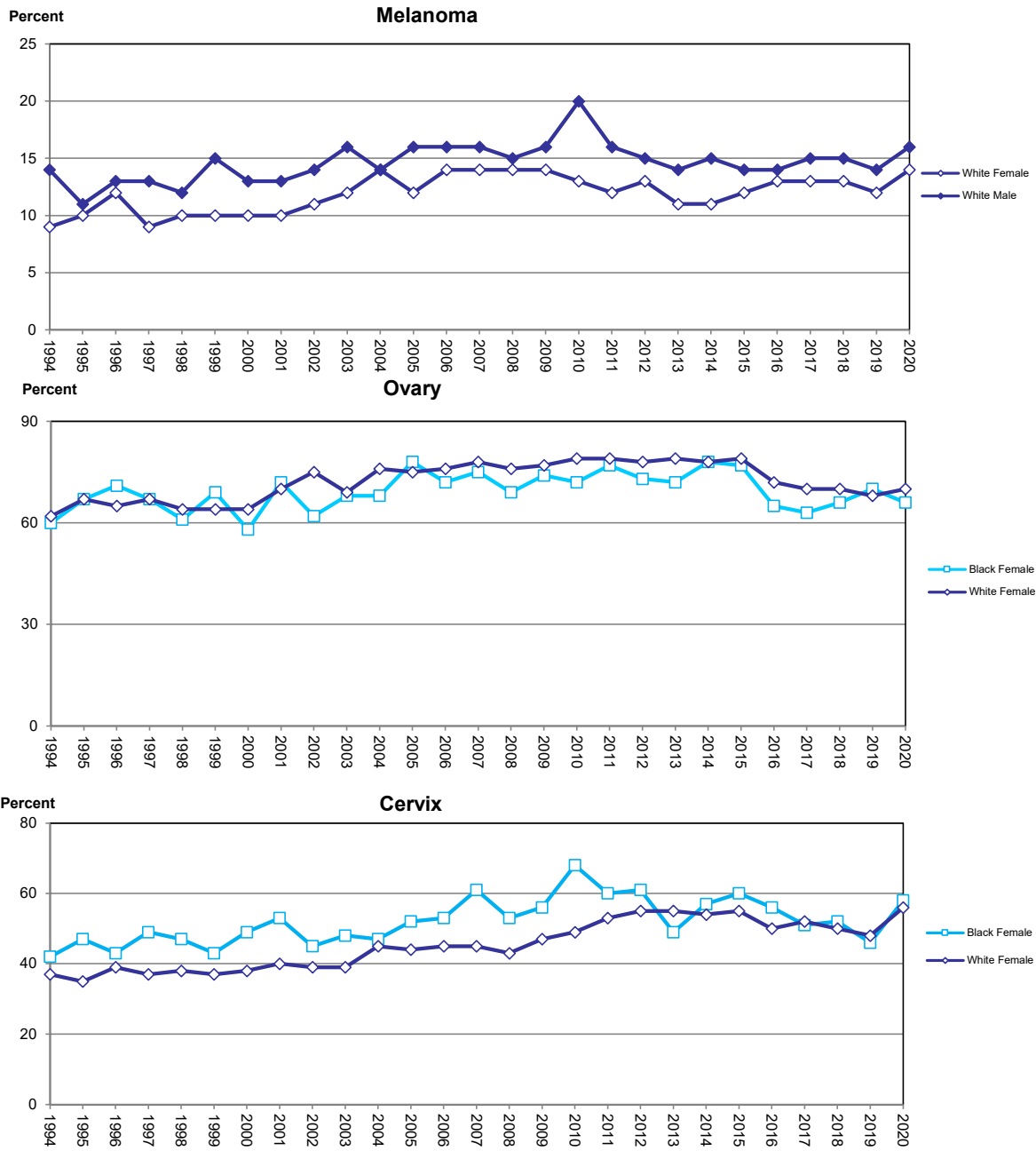
Figure 8.2 Percentage of Advanced Stage Cancer at Diagnosis by Sex and Race, 1994-2020



Advanced stage includes all regional and distant disease

Source of data: Florida Cancer Data System

Figure 8.3 Percentage of Advanced Stage Cancer at Diagnosis by Sex and Race, 2010-2009



Advanced stage includes all regional and distant disease
 Source of data: Florida Cancer Data System