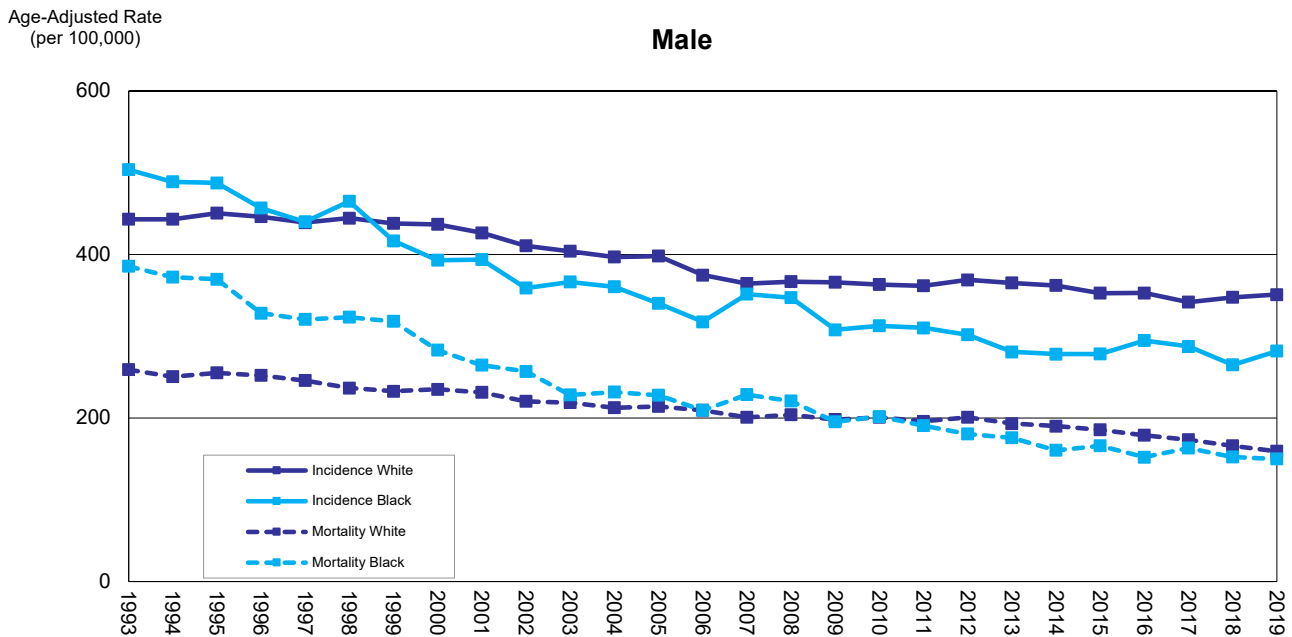
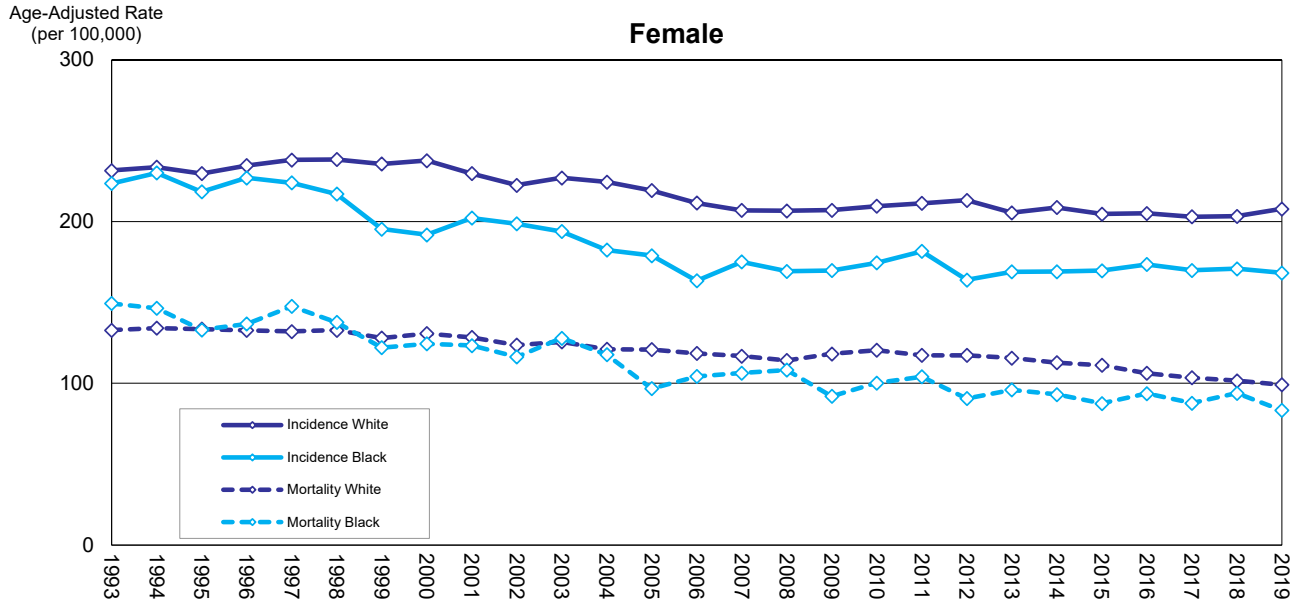


Figure 26. Age-Adjusted Incidence and Mortality for Tobacco Related Cancers (1) by Sex and Race, Florida 1993-2019



(1) Tobacco-related cancers are: lung and bronchus, pancreas, esophagus, stomach, bladder, kidney, oral cavity, larynx, trachea, cervix, and acute myeloid leukemia. Rates are computed for age 35 and older.

Source of data: Florida Cancer Data System and Office of Vital Statistics